

Appendices

Supplementary Reports,
Additional Resources and Maps

Appendix 1

Supplementary Reports and Additional Resources

The Plan Bay Area materials listed below can be found at:

<http://onebayarea.org/regional-initiatives/plan-bay-area/final-plan-bay-area/final-supplementary-reports.html>

Economic Impact Analysis for Future Regional Plans

Environmental Impact Report

Equity Analysis Report: Including Title VI, Environmental Justice and Equity Analysis for Plan Bay Area

Financial Assumptions

Forecast of Jobs, Population and Housing

Glossary

Government-to-Government Consultation with Native American Tribes

Local Street and Road Needs and Revenue Assessment

Online Project Database and Transportation Project List

Performance Assessment Report

Priority Development Area Development Feasibility and Readiness Assessment

Public Outreach and Participation Program (Volumes 1–4)

Regional Housing Need Plan for the San Francisco Bay Area: 2014–2022

State Highway Needs and Revenue Assessment

Summary of Predicted Land Use Responses

Summary of Predicted Traveler Responses

Transit Operating and Capital Needs and Revenue Assessment

Transportation Air Quality Conformity Analysis for Plan Bay Area and the 2013 Transportation Improvement Program

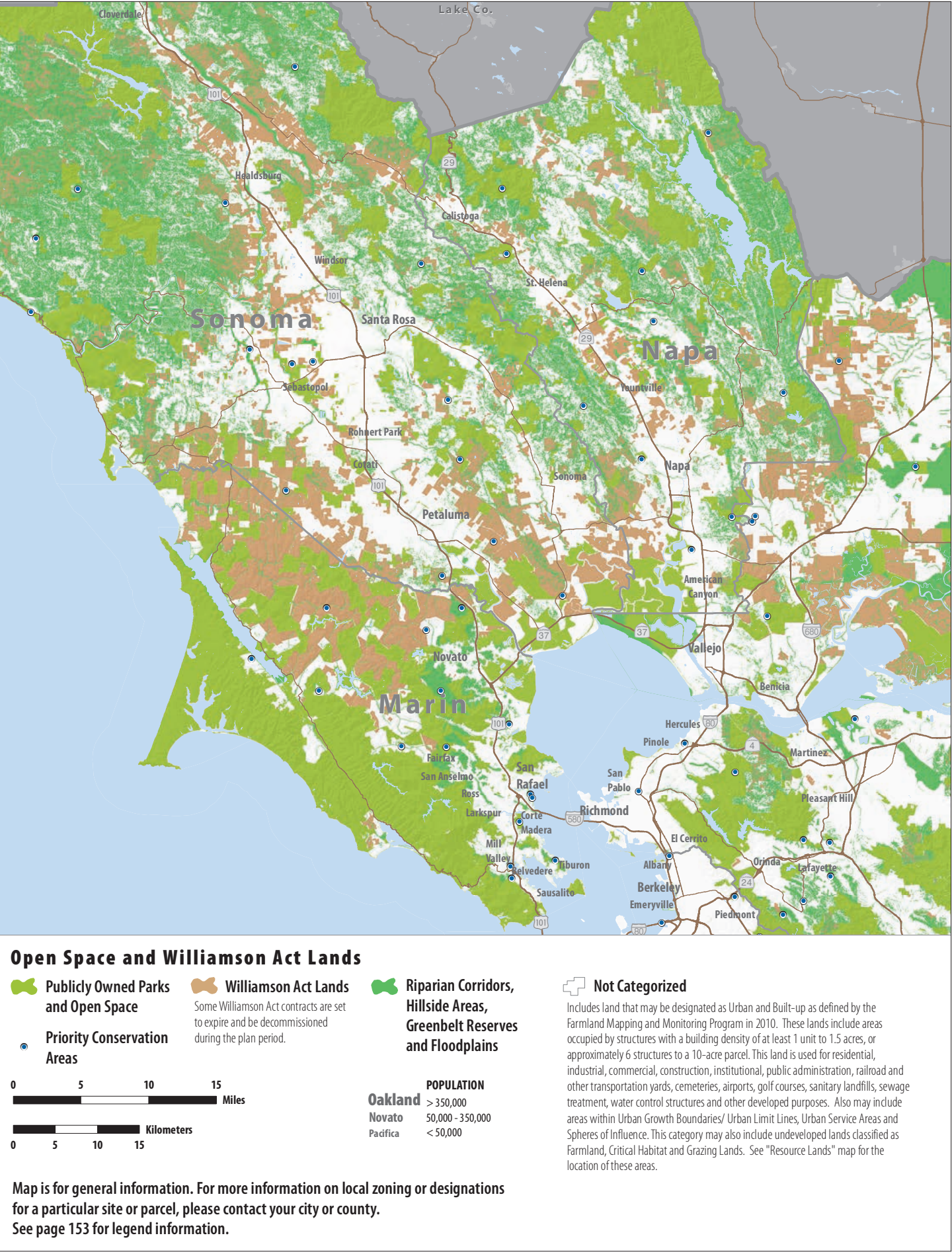
Appendix 2

Maps

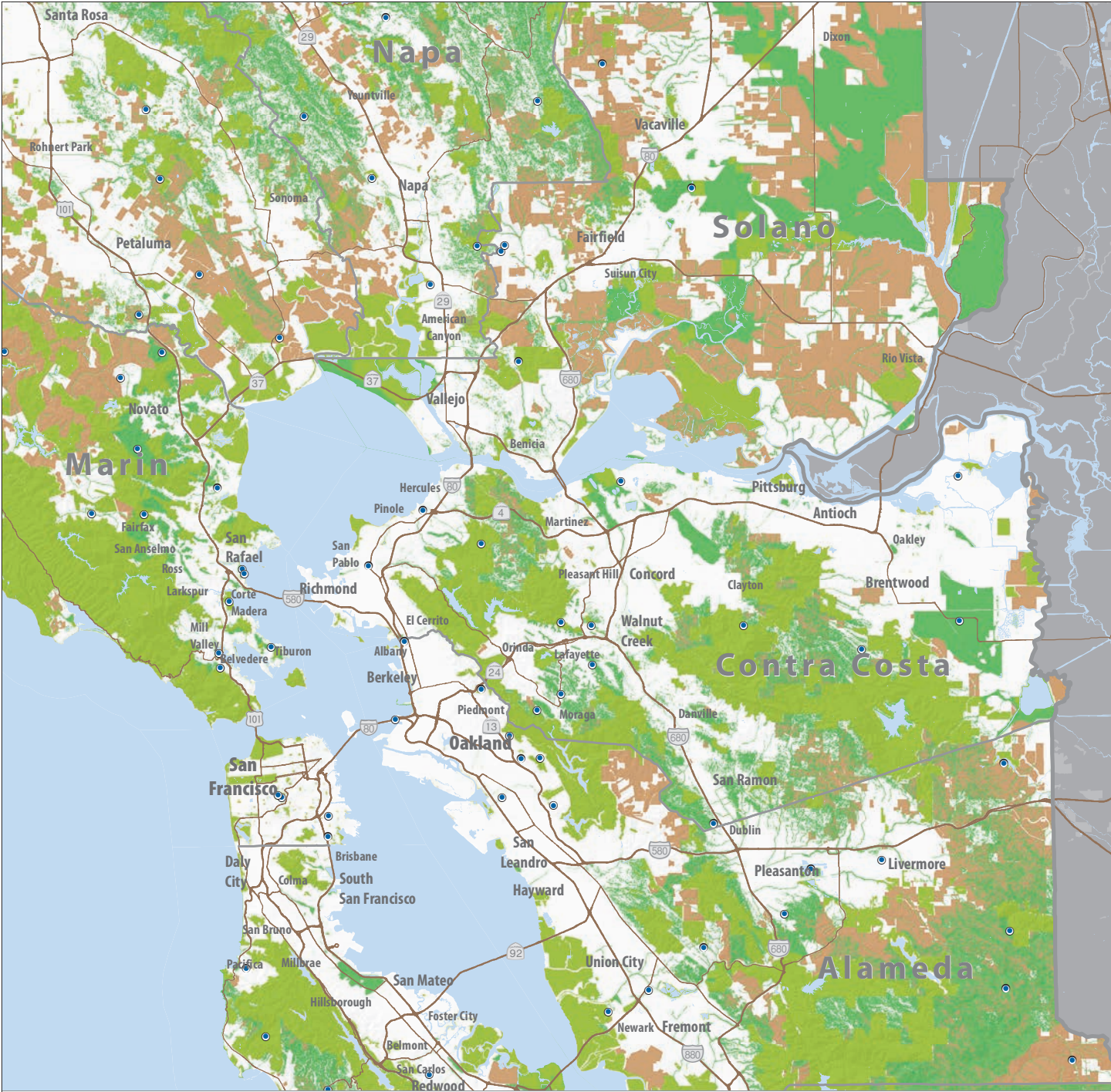
Appendix 2 includes a set of 18 detailed maps of the region showing key resource lands, job and housing growth (2010–2040), and total future housing and job intensities for 2040. For each topic, three close-up maps of different parts of the Bay Area region are included. See page 153 for legend information.

Map	Page
Open Space and Williamson Act Lands: 2013	
14 North Bay/West: Open Space and Williamson Act Lands	135
15 Northeast and Central Bay: Open Space and Williamson Act Lands	136
16 South and West Bay: Open Space and Williamson Act Lands	137
Resource Lands: 2013	
17 North Bay/West: Resource Lands	138
18 Northeast and Central Bay: Resource Lands	139
19 South and West Bay: Resource Lands	140
Job Growth: 2010–2040	
20 North Bay/West: Change in Jobs per Acre — 2010–2040	141
21 Northeast and Central Bay: Change in Jobs per Acre — 2010–2040	142
22 South and West Bay: Change in Jobs per Acre — 2010–2040	143
Household Growth: 2010–2040	
23 North Bay/West: Change in Households per Acre — 2010–2040	144
24 Northeast and Central Bay: Change in Households per Acre — 2010–2040	145
25 South and West Bay: Change in Households per Acre — 2010–2040	146
Jobs per Acre in 2040	
26 North Bay/West: Jobs per Acre in 2040	147
27 Northeast and Central Bay: Jobs per Acre in 2040	148
28 South and West Bay: Jobs per Acre in 2040	149
Households per Acre in 2040	
29 North Bay/West: Households per Acre in 2040	150
30 Northeast and Central Bay: Households per Acre in 2040	151
31 South and West Bay: Households per Acre in 2040	152
Legend Information for Plan Bay Area Maps	153

MAP 14 North Bay/West: Open Space and Williamson Act Lands

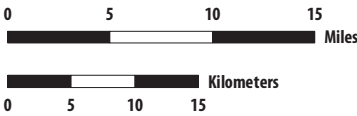


MAP 15 Northeast and Central Bay: Open Space and Williamson Act Lands



Open Space and Williamson Act Lands

- Publicly Owned Parks and Open Space
- Priority Conservation Areas
- Williamson Act Lands
- Riparian Corridors, Hillside Areas, Greenbelt Reserves and Floodplains



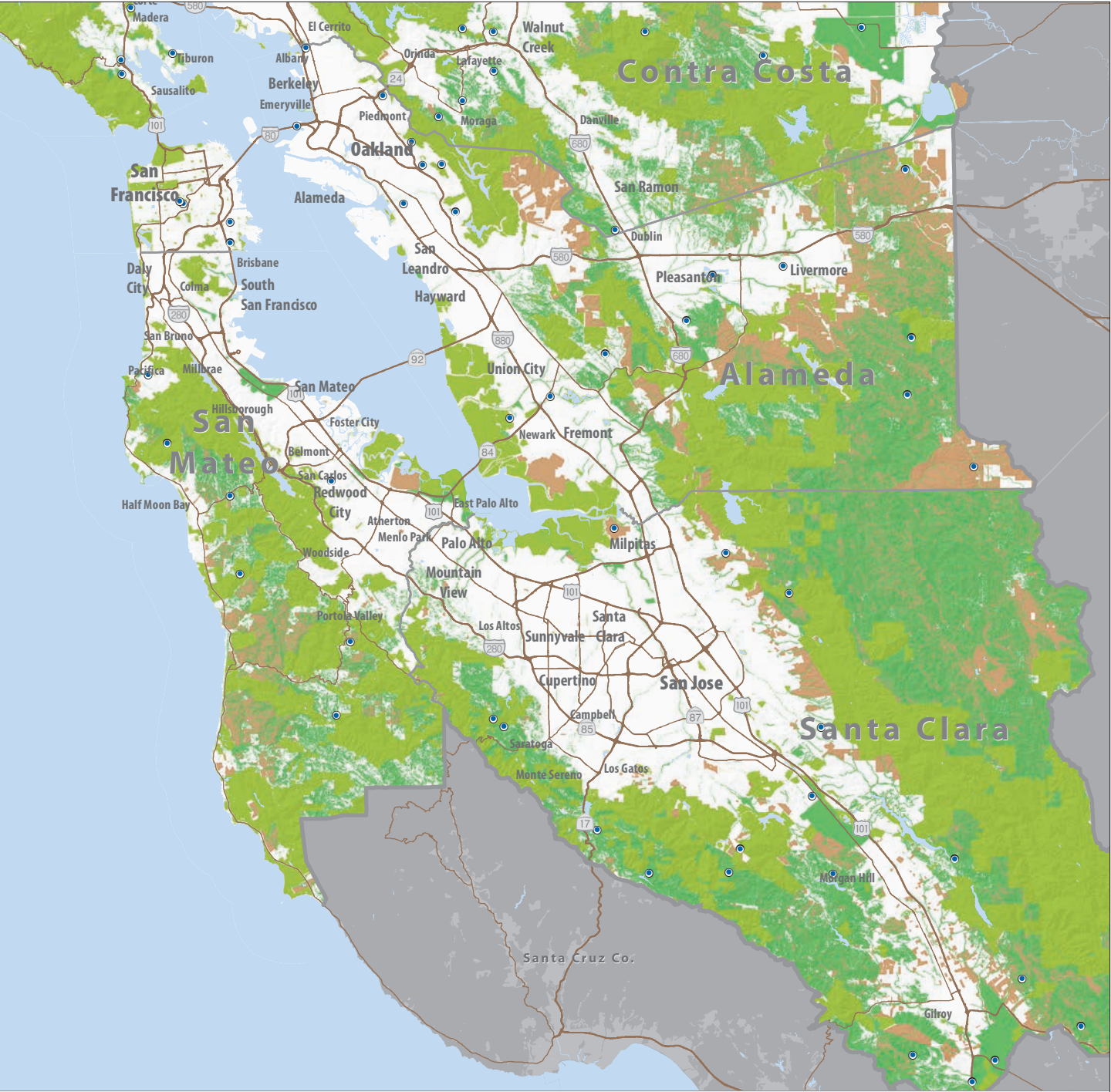
	POPULATION
Oakland	> 350,000
Novato	50,000 - 350,000
Pacifica	< 50,000

Not Categorized

Includes land that may be designated as Urban and Built-up as defined by the Farmland Mapping and Monitoring Program in 2010. These lands include areas occupied by structures with a building density of at least 1 unit to 1.5 acres, or approximately 6 structures to a 10-acre parcel. This land is used for residential, industrial, commercial, construction, institutional, public administration, railroad and other transportation yards, cemeteries, airports, golf courses, sanitary landfills, sewage treatment, water control structures and other developed purposes. Also may include areas within Urban Growth Boundaries/ Urban Limit Lines, Urban Service Areas and Spheres of Influence. This category may also include undeveloped lands classified as Farmland, Critical Habitat and Grazing Lands. See "Resource Lands" map for the location of these areas.

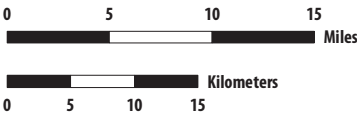
Map is for general information. For more information on local zoning or designations for a particular site or parcel, please contact your city or county. See page 153 for legend information.

MAP 16 South and West Bay: Open Space and Williamson Act Lands



Open Space and Williamson Act Lands

- Publicly Owned Parks and Open Space
- Priority Conservation Areas
- Williamson Act Lands
- Riparian Corridors, Hillside Areas, Greenbelt Reserves and Floodplains



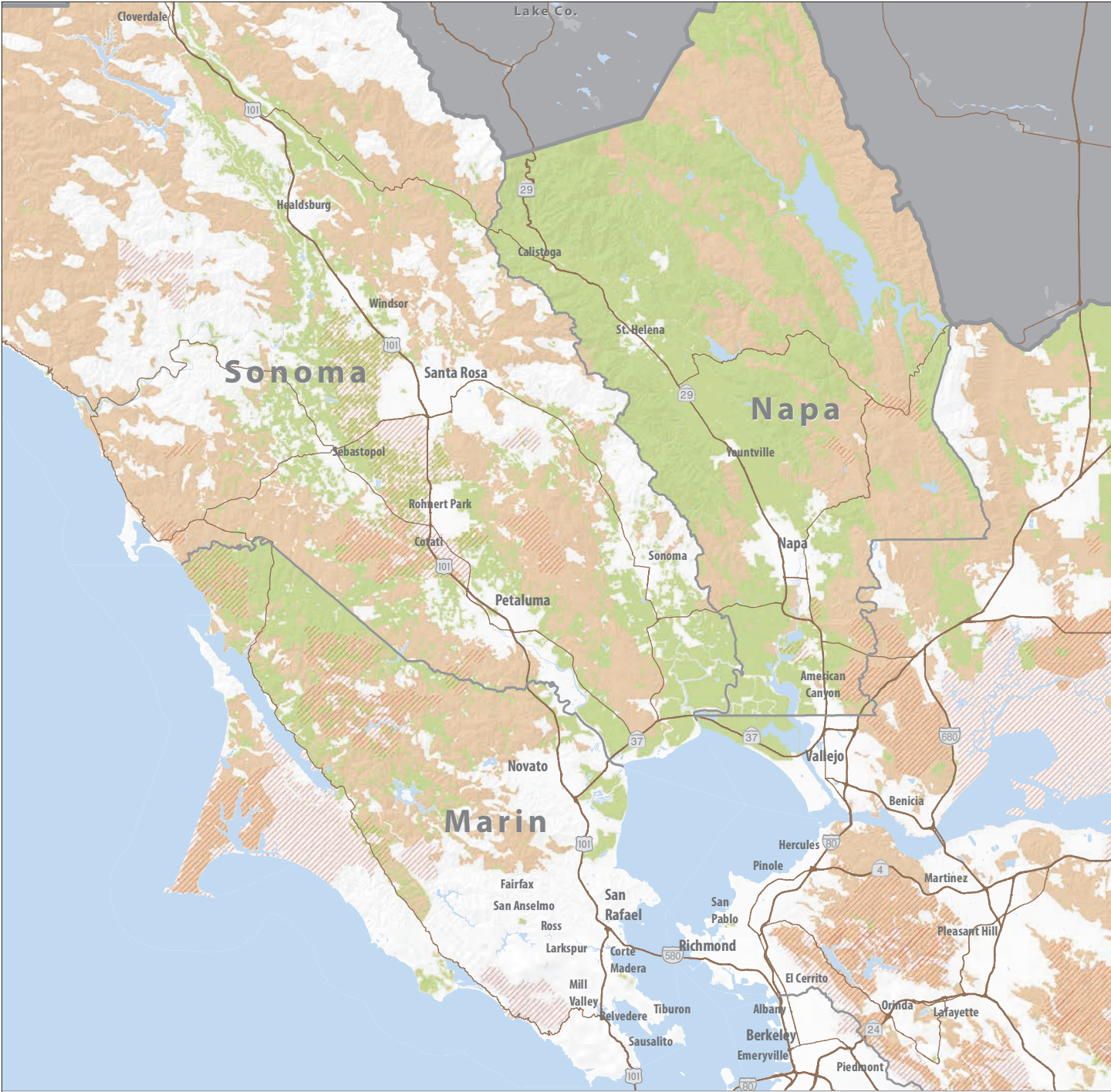
	POPULATION
Oakland	> 350,000
Novato	50,000 - 350,000
Pacifica	< 50,000

Not Categorized

Includes land that may be designated as Urban and Built-up as defined by the Farmland Mapping and Monitoring Program in 2010. These lands include areas occupied by structures with a building density of at least 1 unit to 1.5 acres, or approximately 6 structures to a 10-acre parcel. This land is used for residential, industrial, commercial, construction, institutional, public administration, railroad and other transportation yards, cemeteries, airports, golf courses, sanitary landfills, sewage treatment, water control structures and other developed purposes. Also may include areas within Urban Growth Boundaries/ Urban Limit Lines, Urban Service Areas and Spheres of Influence. This category may also include undeveloped lands classified as Farmland, Critical Habitat and Grazing Lands. See "Resource Lands" map for the location of these areas.

Map is for general information. For more information on local zoning or designations for a particular site or parcel, please contact your city or county. See page 153 for legend information.

MAP 17 North Bay/West: Resource Lands



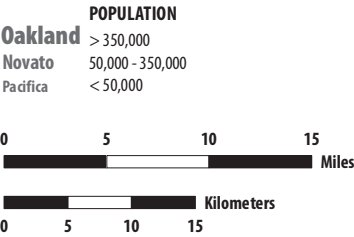
Resource Lands

- Farmland
- Critical Habitat
- Grazing Lands

Not Categorized

Includes land that may be designated as Urban and Built-up as defined by the Farmland Mapping and Monitoring Program in 2010. These lands include areas occupied by structures with a building density of at least 1 unit to 1.5 acres, or approximately 6 structures to a 10-acre parcel. This land is used for residential, industrial, commercial, construction, institutional, public administration, railroad and other transportation yards, cemeteries, airports, golf courses, sanitary landfills, sewage treatment, water control structures, and other developed purposes. Also may include areas within Urban Growth Boundaries/ Urban Limit Lines, Urban Service Areas, and Spheres of Influence. These areas may also include Open Space/Parks, Riparian Corridors, Hillside Areas, Greenbelt Reserves, Floodplains and Williamson Act Lands. See "Open Space and Williamson Act Lands" map for the location of these areas.

Map is for general information. For more information on local zoning or designations for a particular site or parcel, please contact your city or county. See page 153 for legend information.



MAP 18 Northeast and Central Bay: Resource Lands



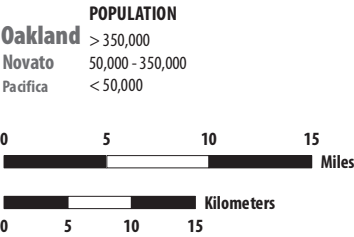
Resource Lands

- Farmland
- Critical Habitat
- Grazing Lands

Not Categorized

Includes land that may be designated as Urban and Built-up as defined by the Farmland Mapping and Monitoring Program in 2010. These lands include areas occupied by structures with a building density of at least 1 unit to 1.5 acres, or approximately 6 structures to a 10-acre parcel. This land is used for residential, industrial, commercial, construction, institutional, public administration, railroad and other transportation yards, cemeteries, airports, golf courses, sanitary landfills, sewage treatment, water control structures, and other developed purposes. Also may include areas within Urban Growth Boundaries/ Urban Limit Lines, Urban Service Areas, and Spheres of Influence. These areas may also include Open Space/Parks, Riparian Corridors, Hillside Areas, Greenbelt Reserves, Floodplains and Williamson Act Lands. See "Open Space and Williamson Act Lands" map for the location of these areas.

Map is for general information. For more information on local zoning or designations for a particular site or parcel, please contact your city or county. See page 153 for legend information.



MAP 19 South and West Bay: Resource Lands



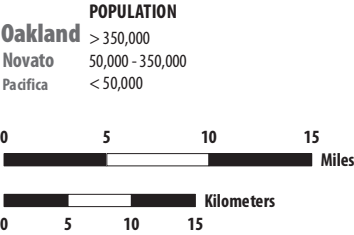
Resource Lands

- Farmland
- Critical Habitat
- Grazing Lands

Not Categorized

Includes land that may be designated as Urban and Built-up as defined by the Farmland Mapping and Monitoring Program in 2010. These lands include areas occupied by structures with a building density of at least 1 unit to 1.5 acres, or approximately 6 structures to a 10-acre parcel. This land is used for residential, industrial, commercial, construction, institutional, public administration, railroad and other transportation yards, cemeteries, airports, golf courses, sanitary landfills, sewage treatment, water control structures, and other developed purposes. Also may include areas within Urban Growth Boundaries/ Urban Limit Lines, Urban Service Areas, and Spheres of Influence. These areas may also include Open Space/Parks, Riparian Corridors, Hillside Areas, Greenbelt Reserves, Floodplains and Williamson Act Lands. See "Open Space and Williamson Act Lands" map for the location of these areas.

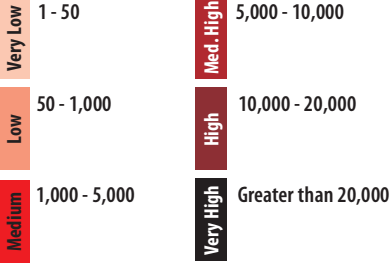
Map is for general information. For more information on local zoning or designations for a particular site or parcel, please contact your city or county. See page 153 for legend information.



MAP 20 North Bay/West: Change in Jobs per Acre — 2010–2040



Change in Jobs per Acre, 2010 - 2040



Priority Development Areas

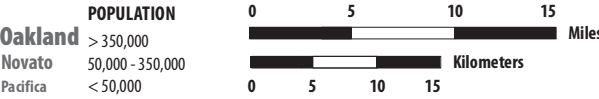
- Planned
- Potential
- Rail Lines

Urbanized Areas

Urbanized Areas: Includes land designated as Urban and Built-up as defined by the Farmland Mapping and Monitoring Program in 2010. These lands include areas occupied by structures with a building density of at least 1 unit to 1.5 acres or approximately 6 structures to a 10-acre parcel. This land is used for residential, industrial, commercial, construction, institutional, public administration, railroad and other transportation yards, cemeteries, airports, golf courses, sanitary landfills, sewage treatment, water control structures and other developed purposes.

Urban Boundary Zones: Includes areas within Urban Growth Boundaries/ Urban Limit Lines, Urban Service Areas and Spheres of Influence.

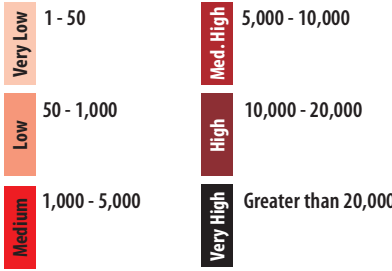
Map is for general information. For more information on local zoning or designations for a particular site or parcel, please contact your city or county.



MAP 21 Northeast and Central Bay: Change in Jobs per Acre — 2010–2040



Change in Jobs per Acre, 2010 - 2040



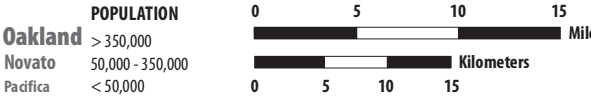
Priority Development Areas

- Planned**
A Planned PDA has a formally adopted plan, as determined by a local jurisdiction.
- Potential**
A Potential PDA requires more local planning, review and action before it can become a Planned PDA.
- Rail Lines**

- Urbanized Areas**
- Urban Boundary Zones**

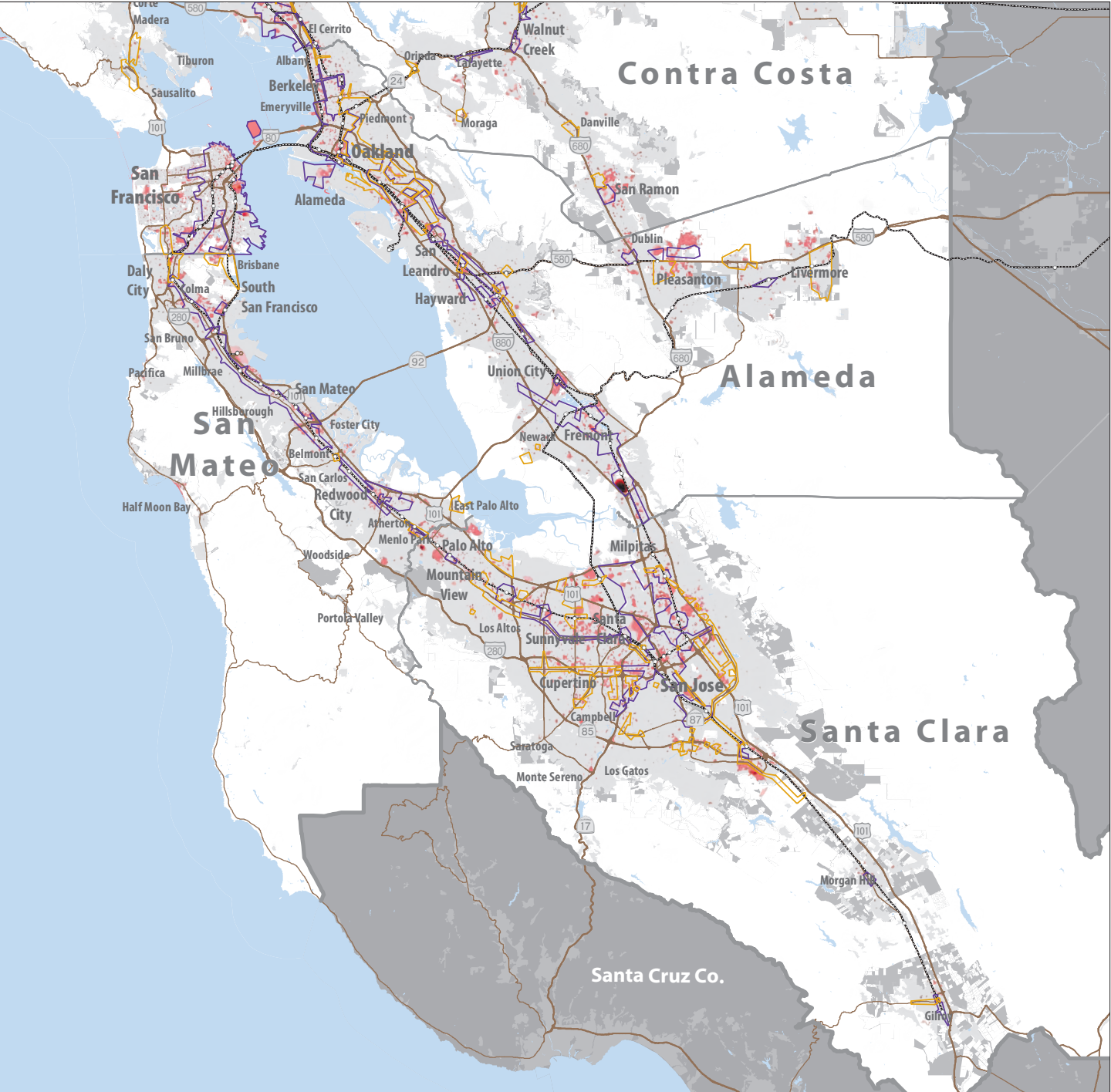
Urbanized Areas: Includes land designated as Urban and Built-up as defined by the Farmland Mapping and Monitoring Program in 2010. These lands include areas occupied by structures with a building density of at least 1 unit to 1.5 acres or approximately 6 structures to a 10-acre parcel. This land is used for residential, industrial, commercial, construction, institutional, public administration, railroad and other transportation yards, cemeteries, airports, golf courses, sanitary landfills, sewage treatment, water control structures and other developed purposes.

Urban Boundary Zones: Includes areas within Urban Growth Boundaries/ Urban Limit Lines, Urban Service Areas and Spheres of Influence.

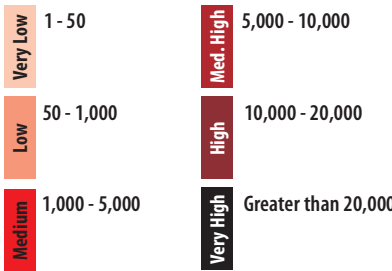


Map is for general information. For more information on local zoning or designations for a particular site or parcel, please contact your city or county.

MAP 22 South and West Bay: Change in Jobs per Acre — 2010–2040



Change in Jobs per Acre, 2010 - 2040



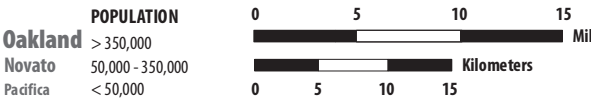
Priority Development Areas

- Planned**
A Planned PDA has a formally adopted plan, as determined by a local jurisdiction.
- Potential**
A Potential PDA requires more local planning, review and action before it can become a Planned PDA.
- Rail Lines**

- Urbanized Areas**
- Urban Boundary Zones**

Urbanized Areas: Includes land designated as Urban and Built-up as defined by the Farmland Mapping and Monitoring Program in 2010. These lands include areas occupied by structures with a building density of at least 1 unit to 1.5 acres or approximately 6 structures to a 10-acre parcel. This land is used for residential, industrial, commercial, construction, institutional, public administration, railroad and other transportation yards, cemeteries, airports, golf courses, sanitary landfills, sewage treatment, water control structures and other developed purposes.

Urban Boundary Zones: Includes areas within Urban Growth Boundaries/ Urban Limit Lines, Urban Service Areas and Spheres of Influence.



Map is for general information. For more information on local zoning or designations for a particular site or parcel, please contact your city or county.



This map displays the counties of Sonoma, Napa, and Marin in Northern California. Major cities and towns are labeled, including Healdsburg, Santa Rosa, Sebastopol, Petaluma, Novato, San Rafael, and San Francisco. The map also shows major highways such as 101, 29, 37, 580, and 80. A grid of red and blue lines is overlaid on the map, likely representing a study area or a specific project boundary. The map is oriented with North at the top.

Very Low	1 - 8	Med. - High	30 - 60
Low	8 - 10	High	60 - 85
Medium	10 - 30	Very High	Greater than 85

- ☒ **Planned**
A Planned PDA has a formally adopted plan, as determined by a local jurisdiction.
- ☐ **Potential**
A Potential PDA requires more local planning, review and action before it can become a Planned PDA.

Urbanized Areas: Includes land designated as Urban and Built-up as defined by the Farmland Mapping and Monitoring Program in 2010. These lands include areas occupied by structures with a building density of at least 1 unit to 1.5 acres or approximately 6 structures to a 10-acre parcel. This land is used for residential, industrial, commercial, construction, institutional, public administration, railroad and other transportation yards, cemeteries, airports, golf courses, sanitary landfills, sewage treatment, water control structures and other developed purposes.

Urban Boundary Zones: Includes areas within Urban Growth Boundaries/ Urban Limit Lines, Urban Service Areas and Spheres of Influence.

	POPULATION	0	5	10	15	
Oakland	> 350,000					Miles
Novato	50,000 - 350,000					Kilometers
Pacifica	< 50,000	0	5	10	15	

144 Plan Bay Area

This map illustrates the San Francisco Bay Area, highlighting the counties of Napa, Solano, Marin, Contra Costa, Alameda, and San Francisco. Major cities and towns are labeled, including San Francisco, Oakland, San Jose, San Diego, and San Ramon. The map also shows various transportation routes, such as highways (e.g., 101, 205, 680, 880) and bridges (e.g., Golden Gate Bridge, Bay Bridge). Landmarks like the San Francisco Bay and the San Francisco Peninsula are visible. The map uses a color-coded system to distinguish between different regions and transportation modes, with red lines indicating major highways and blue lines indicating water bodies.

Very Low	1 - 8	Med. High	30 - 60
Low	8 - 10	High	60 - 85
Medium	10 - 30	Very High	Greater than 85

- ☐ **Planned**
A Planned PDA has a formally adopted plan, as determined by a local jurisdiction.
- ☐ **Potential**
A Potential PDA requires more local planning, review and action before it can become a Planned PDA.

Rail Lines

Urbanized Areas: Includes land designated as Urban and Built-up as defined by the Farmland Mapping and Monitoring Program in 2010. These lands include areas occupied by structures with a building density of at least 1 unit to 1.5 acres or approximately 6 structures to a 10-acre parcel. This land is used for residential, industrial, commercial, construction, institutional, public administration, railroad and other transportation yards, cemeteries, airports, golf courses, sanitary landfills, sewage treatment, water control structures and other developed purposes.

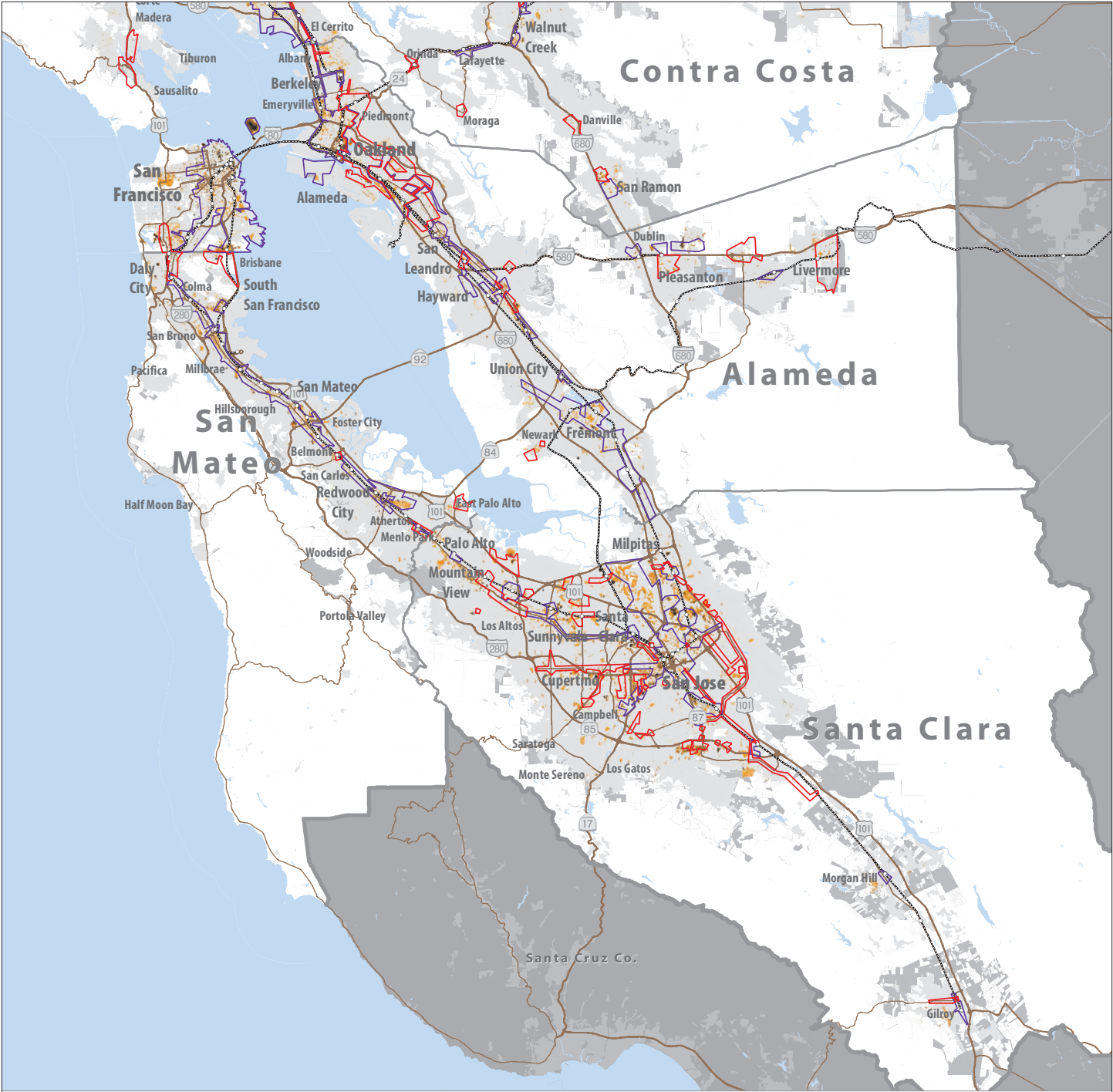
Urban Boundary Zones: Includes areas within Urban Growth Boundaries/ Urban Limit Lines, Urban Service Areas and Spheres of Influence.

POPULATION

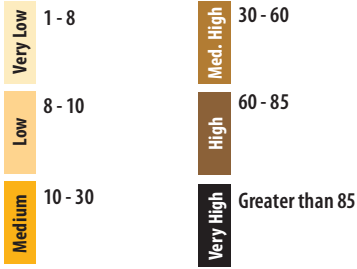
Oakland	> 350,000	0	5	10	15	Miles
Novato	50,000 - 350,000	0	5	10	15	Kilometers
Pacifica	< 50,000	0	5	10	15	

Appendix 2 | Maps 145

MAP 25 South and West Bay: Change in Households per Acre — 2010–2040



Change in Households per Acre, 2010 - 2040



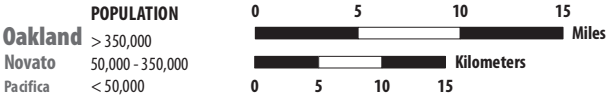
Priority Development Areas

- Planned**
A Planned PDA has a formally adopted plan, as determined by a local jurisdiction.
 - Potential**
A Potential PDA requires more local planning, review and action before it can become a Planned PDA.
- Rail Lines

- Urbanized Areas**
- Urban Boundary Zones**

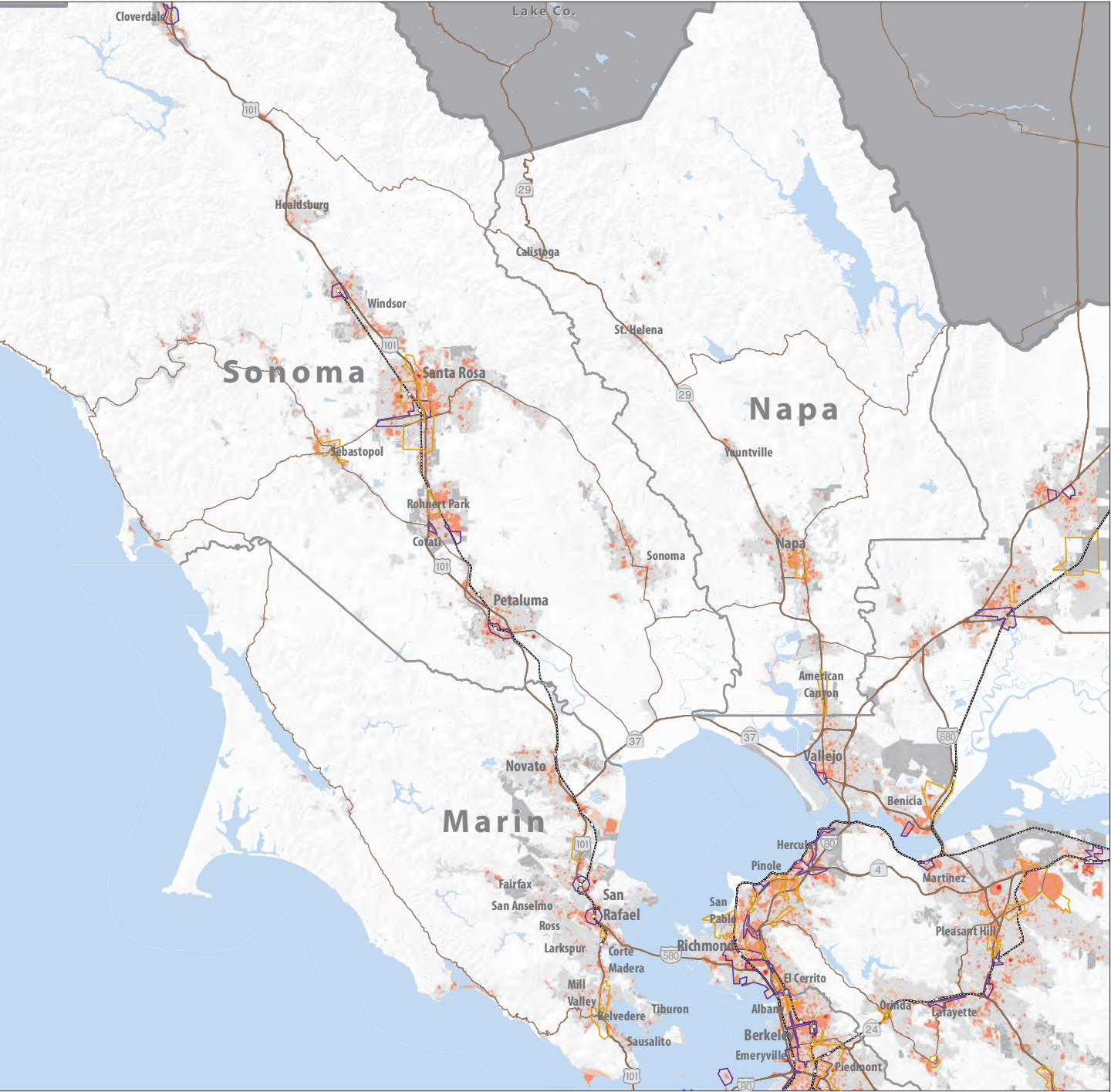
Urbanized Areas: Includes land designated as Urban and Built-up as defined by the Farmland Mapping and Monitoring Program in 2010. These lands include areas occupied by structures with a building density of at least 1 unit to 1.5 acres or approximately 6 structures to a 10-acre parcel. This land is used for residential, industrial, commercial, construction, institutional, public administration, railroad and other transportation yards, cemeteries, airports, golf courses, sanitary landfills, sewage treatment, water control structures and other developed purposes.

Urban Boundary Zones: Includes areas within Urban Growth Boundaries/ Urban Limit Lines, Urban Service Areas and Spheres of Influence.

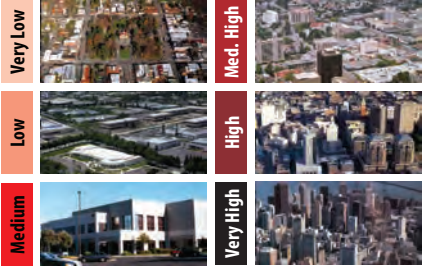


Map is for general information. For more information on local zoning or designations for a particular site or parcel, please contact your city or county.

MAP 26 North Bay/West: Jobs per Acre in 2040



Jobs per Acre in 2040



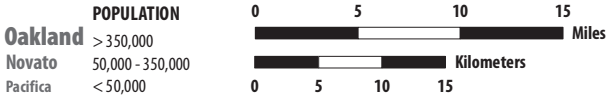
Priority Development Areas

- Planned**
A Planned PDA has a formally adopted plan, as determined by a local jurisdiction.
 - Potential**
A Potential PDA requires more local planning, review and action before it can become a Planned PDA.
- Rail Lines

- Urbanized Areas**
- Urban Boundary Zones**

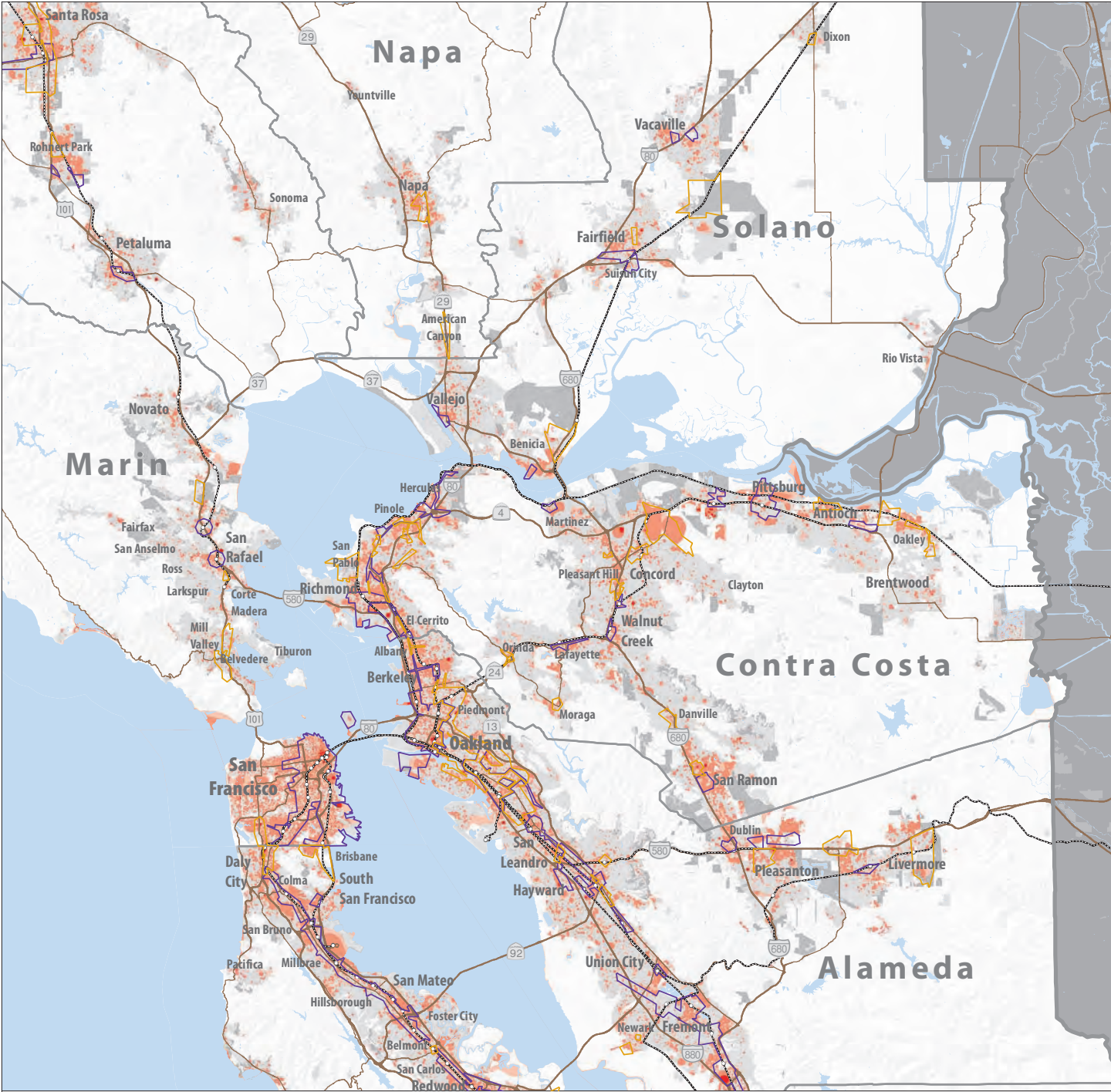
Urbanized Areas: Includes land designated as Urban and Built-up as defined by the Farmland Mapping and Monitoring Program in 2010. These lands include areas occupied by structures with a building density of at least 1 unit to 1.5 acres or approximately 6 structures to a 10-acre parcel. This land is used for residential, industrial, commercial, construction, institutional, public administration, railroad and other transportation yards, cemeteries, airports, golf courses, sanitary landfills, sewage treatment, water control structures and other developed purposes.

Urban Boundary Zones: Includes areas within Urban Growth Boundaries/ Urban Limit Lines, Urban Service Areas and Spheres of Influence.



Map is for general information. For more information on local zoning or designations for a particular site or parcel, please contact your city or county.

MAP 27 Northeast and Central Bay: Jobs per Acre in 2040



Jobs per Acre in 2040



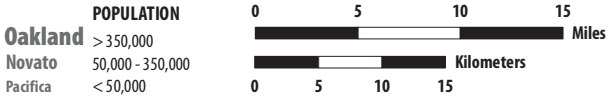
Priority Development Areas

- Planned**
A Planned PDA has a formally adopted plan, as determined by a local jurisdiction.
- Potential**
A Potential PDA requires more local planning, review and action before it can become a Planned PDA.
- Rail Lines**

- Urbanized Areas**
- Urban Boundary Zones**

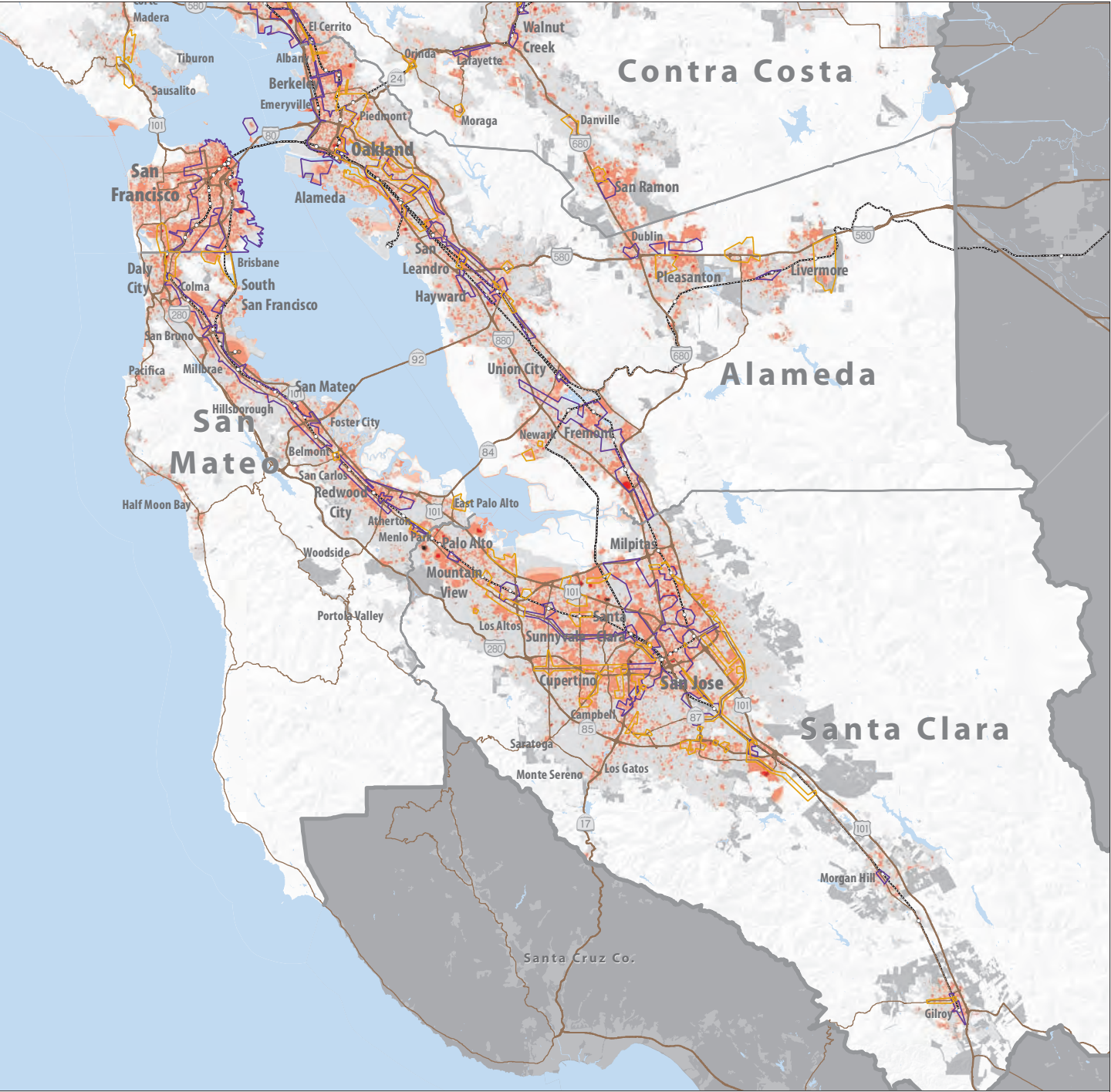
Urbanized Areas: Includes land designated as Urban and Built-up as defined by the Farmland Mapping and Monitoring Program in 2010. These lands include areas occupied by structures with a building density of at least 1 unit to 1.5 acres or approximately 6 structures to a 10-acre parcel. This land is used for residential, industrial, commercial, construction, institutional, public administration, railroad and other transportation yards, cemeteries, airports, golf courses, sanitary landfills, sewage treatment, water control structures and other developed purposes.

Urban Boundary Zones: Includes areas within Urban Growth Boundaries/ Urban Limit Lines, Urban Service Areas and Spheres of Influence.



Map is for general information. For more information on local zoning or designations for a particular site or parcel, please contact your city or county.

MAP 28 South and West Bay: Jobs per Acre in 2040



Jobs per Acre in 2040



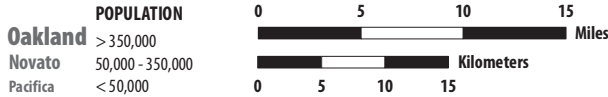
Priority Development Areas

- Planned**
A Planned PDA has a formally adopted plan, as determined by a local jurisdiction.
- Potential**
A Potential PDA requires more local planning, review and action before it can become a Planned PDA.
- Rail Lines**

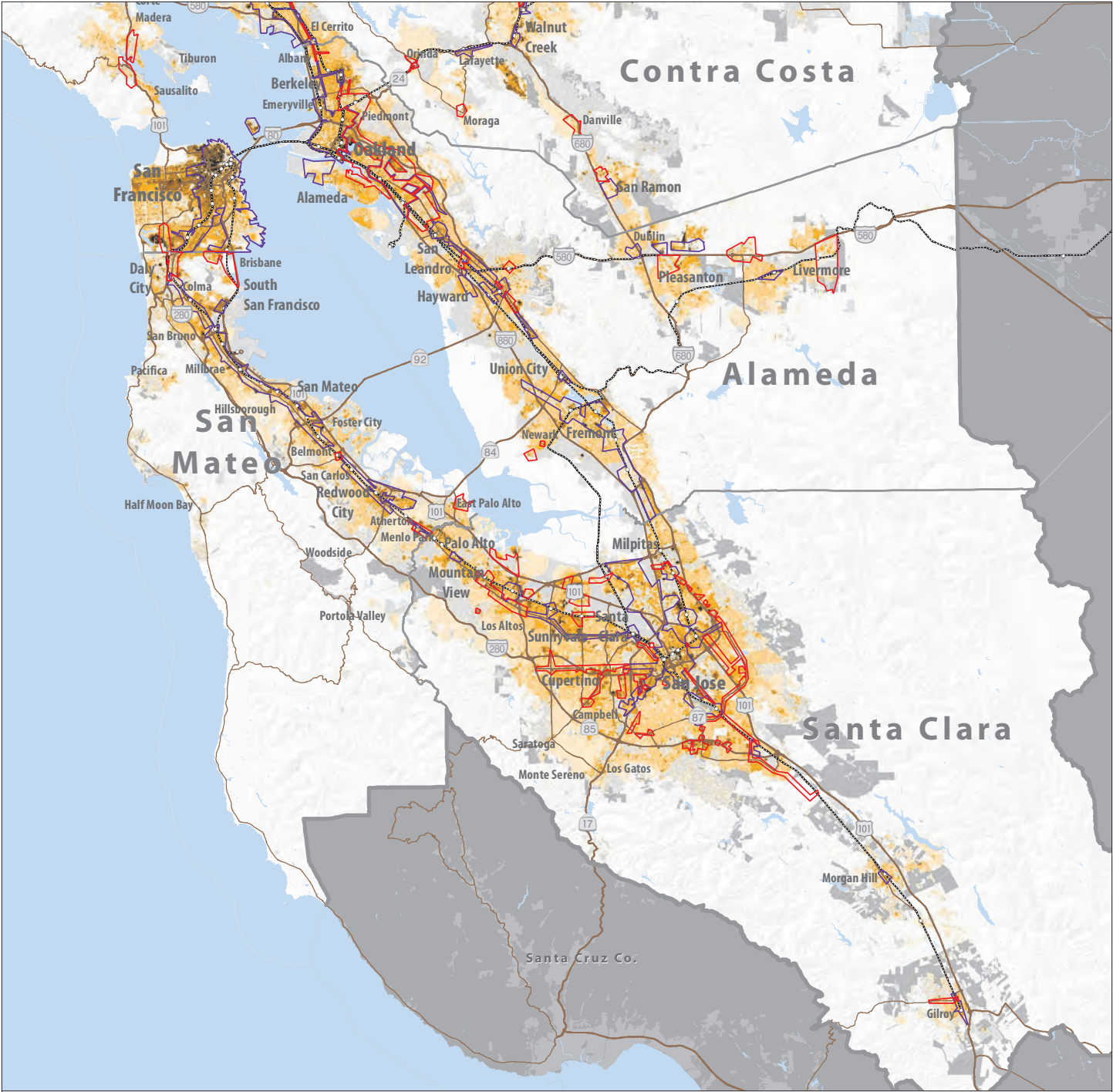
- Urbanized Areas**
- Urban Boundary Zones**

Urbanized Areas: Includes land designated as Urban and Built-up as defined by the Farmland Mapping and Monitoring Program in 2010. These lands include areas occupied by structures with a building density of at least 1 unit to 1.5 acres or approximately 6 structures to a 10-acre parcel. This land is used for residential, industrial, commercial, construction, institutional, public administration, railroad and other transportation yards, cemeteries, airports, golf courses, sanitary landfills, sewage treatment, water control structures and other developed purposes.

Urban Boundary Zones: Includes areas within Urban Growth Boundaries/ Urban Limit Lines, Urban Service Areas and Spheres of Influence.



Map is for general information. For more information on local zoning or designations for a particular site or parcel, please contact your city or county.



Households per Acre in 2040



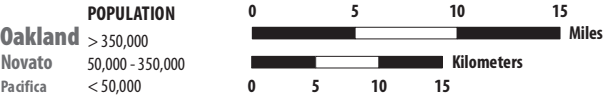
Priority Development Areas

- Planned**
A Planned PDA has a formally adopted plan, as determined by a local jurisdiction.
- Potential**
A Potential PDA requires more local planning, review and action before it can become a Planned PDA.
- Rail Lines**

Urbanized Areas
Urban Boundary Zones

Urbanized Areas: Includes land designated as Urban and Built-up as defined by the Farmland Mapping and Monitoring Program in 2010. These lands include areas occupied by structures with a building density of at least 1 unit to 1.5 acres or approximately 6 structures to a 10-acre parcel. This land is used for residential, industrial, commercial, construction, institutional, public administration, railroad and other transportation yards, cemeteries, airports, golf courses, sanitary landfills, sewage treatment, water control structures and other developed purposes.

Urban Boundary Zones: Includes areas within Urban Growth Boundaries/ Urban Limit Lines, Urban Service Areas and Spheres of Influence.



Map is for general information. For more information on local zoning or designations for a particular site or parcel, please contact your city or county.

Legend Information for Plan Bay Area Maps

Data	Description
Critical Habitat Source: National Marine Fisheries Service; U.S. Fish and Wildlife Service; California Department of Fish and Wildlife; California Natural Diversity Database.	Includes lands designated as habitat for protected, sensitive or special-status species as defined by local, state or federal agencies, or protected by the federal Endangered Species Act, the California Endangered Species Act or the Native Plant Protection Act.
Farmland Source: Farmland Mapping and Monitoring Program, 2010.	Includes voter-approved, agriculturally zoned land that is identified as important for protection from urban development, and land outside all existing city spheres of influence or city limits as of January 2010 that is one of the following Department of Conservation's Farmland Mapping and Monitoring Program (FMMP) classifications: <ul style="list-style-type: none">• Prime Farmland• Unique Farmland• Farmland of Statewide Importance
Floodplains Source: U.S. Federal Emergency Management Agency; data compiled by Greenbelt Alliance staff in February 2012.	Floodplain areas identified as important for protection within a city's general plan. Based upon general plans and 100-year storm flood level from the U.S. Federal Emergency Management Agency.
Grazing Lands Source: Farmland Mapping and Monitoring Program, 2010.	Defined by the FMMP in 2010, this category includes land on which the existing vegetation is suited to the grazing of livestock. This category was developed in cooperation with the California Cattlemen's Association, University of California Cooperative Extension and other groups interested in the extent of grazing activities.

Greenbelt Reserves Source: Based upon Local Jurisdiction General Plan maps. Data compiled by Greenbelt Alliance staff in March 2012.	Large open space reserves that are set aside permanently or temporarily by a single jurisdiction or several jurisdictions.
--	--

Hillside Areas Source: Based upon local jurisdiction General Plan maps. Data compiled by Greenbelt Alliance staff in March 2012.	Hillside areas identified as important for protection or conservation based on city and county general plans. Policies mapped include areas identified based up the slope of a hill, the area above a certain elevation, and the area within a certain vertical or horizontal distance from a ridge line.
--	---

Continues on following page

Legend Information for Plan Bay Area Maps *(Continued)*

Data	Description
Priority Conservation Areas Source: Association of Bay Area Governments, 2013.	These areas include lands of regional significance that have broad community support and an urgent need for protection. These areas provide important agricultural, natural resource, historical, scenic, cultural, recreational, and/or ecological values and ecosystem functions.
Publicly Owned Parks and Open Space Source: Data is derived from the Bay Area Protected Areas Database, Bay Area Open Space Council, 2012; California State Park Boundaries, 2012; The Conservation Lands Network, 2012.	These areas include publicly owned lands that are accessible to the public.
Riparian Corridors Source: Based upon local jurisdiction General Plan maps. Data compiled by Greenbelt Alliance staff in November 2011.	A policy that limits or prohibits new construction within a certain distance from rivers and streams to avoid the adverse impacts of urban development, such as pollution runoff, erosion and habitat degradation.
Urban Boundary Zones Source: Based upon local jurisdiction General Plan maps. Data compiled by ABAG Planning staff, March 2012.	Includes areas within Urban Growth Boundaries/ Urban Limit Lines, Urban Service Areas and Spheres of Influence. For more information, see the supplementary report, <i>Summary of Predicted Land Use Responses</i> .
Urbanized Areas Source: Farmland Mapping and Monitoring Program, 2010.	Includes land designated as Urban and Built-up as defined by the Farmland Mapping and Monitoring Program in 2010. These lands include areas occupied by structures with a building density of at least 1 unit to 1.5 acres, or approximately 6 structures to a 10-acre parcel. This land is used for residential, industrial, commercial, construction, institutional, public administration, railroad and other transportation yards, cemeteries, airports, golf courses, sanitary landfills, sewage treatment, water control structures, and other developed purposes.
Williamson Act Lands Source: Williamson Act Program, California Department of Conservation, 2006.	The California Land Conservation Act of 1965 — commonly referred to as the Williamson Act — enables local governments to enter into contracts with private landowners for the purpose of restricting specific parcels of land to agricultural or related open space use. Some Williamson Act contracts are set to expire and be decommissioned during the plan period.