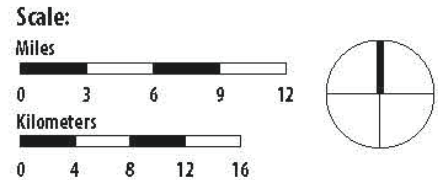


Plan Bay Area 2040

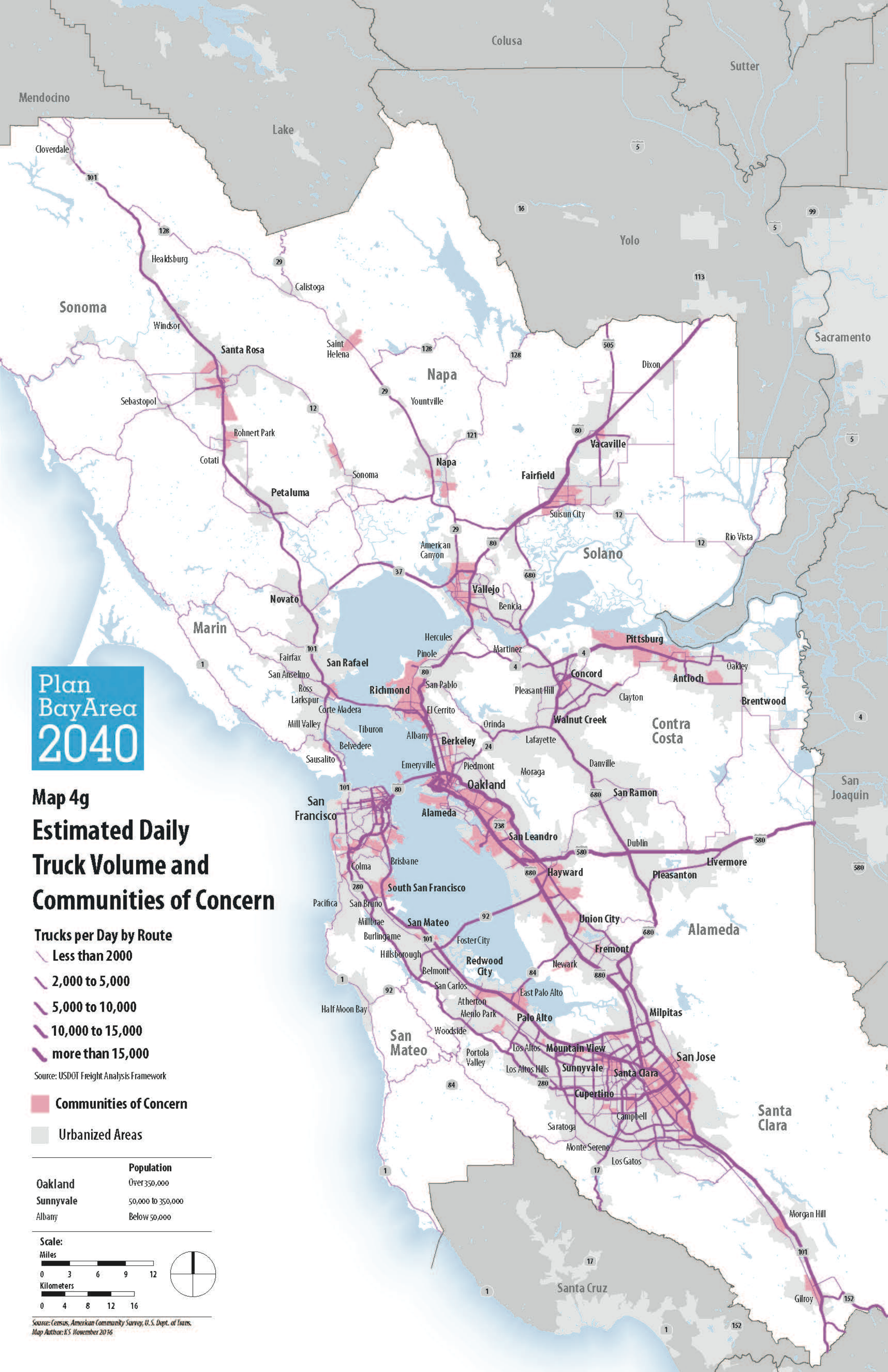
**Map 3e**  
**Low Income Population**  
 American Community Survey 2014  
 Tracts Within Urban Area

- Percent of Low Income Population by Tract**
- Less than 5%
  - Between 5 to 10%
  - Between 10 to 20%
  - Between 20 to 40%
  - More than 40%
  - Communities of Concern

	Population
Oakland	Over 350,000
Sunnyvale	50,000 to 350,000
Albany	Below 50,000



Source: Census, American Community Survey  
 Note: Tracts with population below 500 not shown.  
 Map Author: KS // November 2016



**Plan BayArea 2040**

**Map 4g  
Estimated Daily  
Truck Volume and  
Communities of Concern**

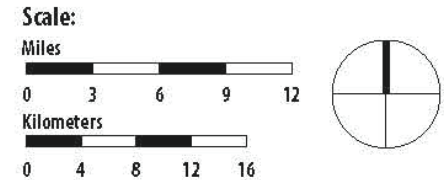
**Trucks per Day by Route**

- Less than 2000
- 2,000 to 5,000
- 5,000 to 10,000
- 10,000 to 15,000
- more than 15,000

Source: USDOT Freight Analysis Framework

- Communities of Concern
- Urbanized Areas

	Population
Oakland	Over 350,000
Sunnyvale	50,000 to 350,000
Albany	Below 50,000

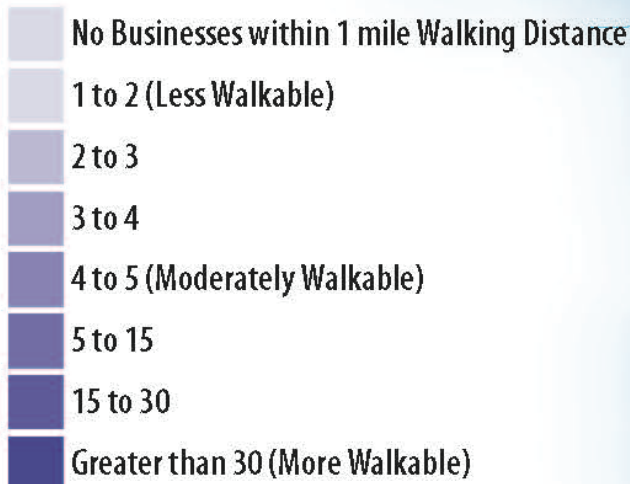


Source: Census, American Community Survey, U.S. Dept. of Trans.  
Map Author: KS // November 2016

# Plan Bay Area 2040

## Map 41 Walkability in 2006 Weighted By Business Categories and Distance to Destinations Tracts Within Urbanized Areas

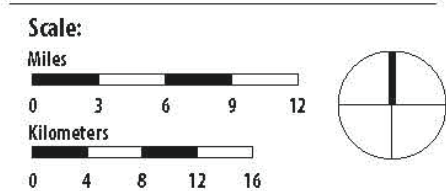
### Walkability Index



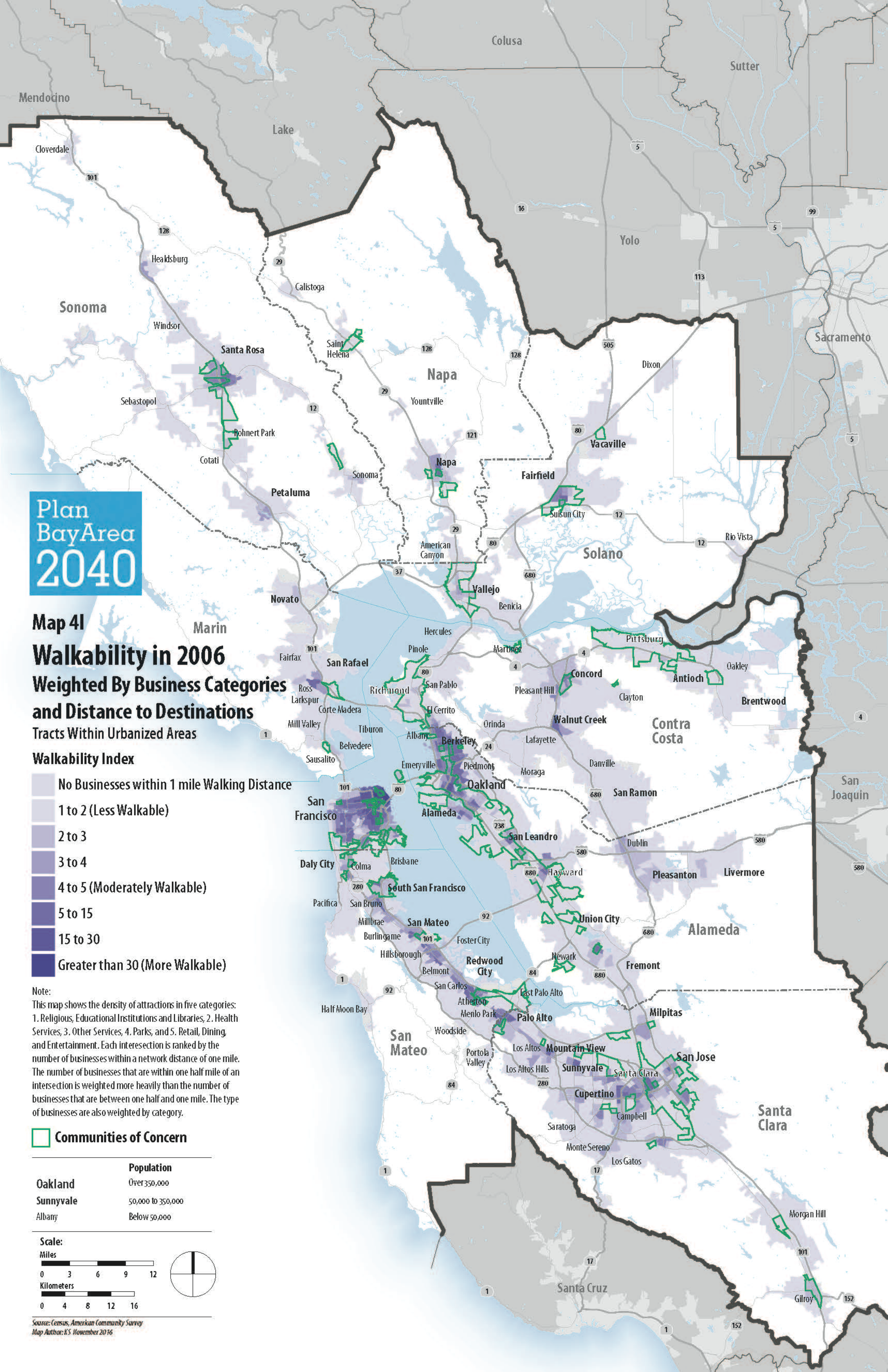
Note:  
This map shows the density of attractions in five categories: 1. Religious, Educational Institutions and Libraries, 2. Health Services, 3. Other Services, 4. Parks, and 5. Retail, Dining, and Entertainment. Each intersection is ranked by the number of businesses within a network distance of one mile. The number of businesses that are within one half mile of an intersection is weighted more heavily than the number of businesses that are between one half and one mile. The type of businesses are also weighted by category.

### Communities of Concern

	Population
Oakland	Over 350,000
Sunnyvale	50,000 to 350,000
Albany	Below 50,000



Source: Census, American Community Survey  
Map Author: KS // November 2016



# Plan Bay Area 2040

## Map 4m High Opportunity Areas Neighborhood Health & Housing, Education, Economic and Mobility Opportunity Indicators Kirwan Institute for the Study of Race and Ethnicity 2010 Tracts Within Urbanized Areas

### Comprehensive Opportunity Index

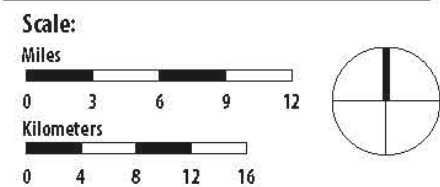
- High Opportunity Areas
- Very High Opportunity Areas

Represents 18 different indicators in the following categories:  
Neighborhood Health & Housing  
Education  
Economic and Mobility

About this Data:  
<http://kirwaninstitute.osu.edu/researchandstrategicinitiatives/>

- Communities of Concern
- Urbanized Areas

	Population
Oakland	Over 350,000
Sunnyvale	50,000 to 350,000
Albany	Below 50,000



Source: Census, American Community Survey  
Map Author: KS // November 2016

