



Advancing Nature-based Shoreline Solutions

Caitlin Sweeney, Director

Heidi Nutters, Senior Program Manager



Photo: Ben Botkin



San Francisco
ESTUARY PARTNERSHIP



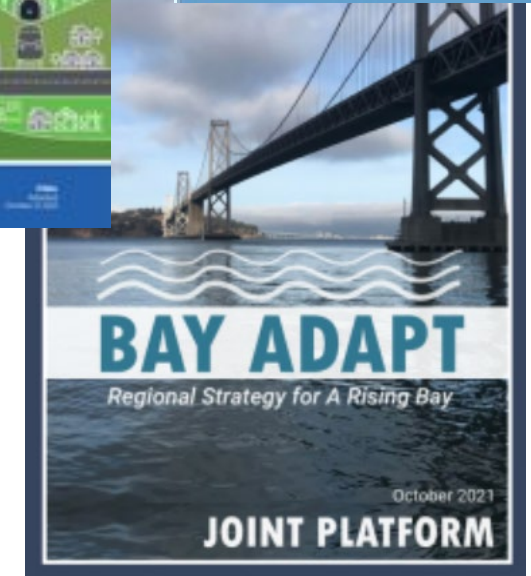
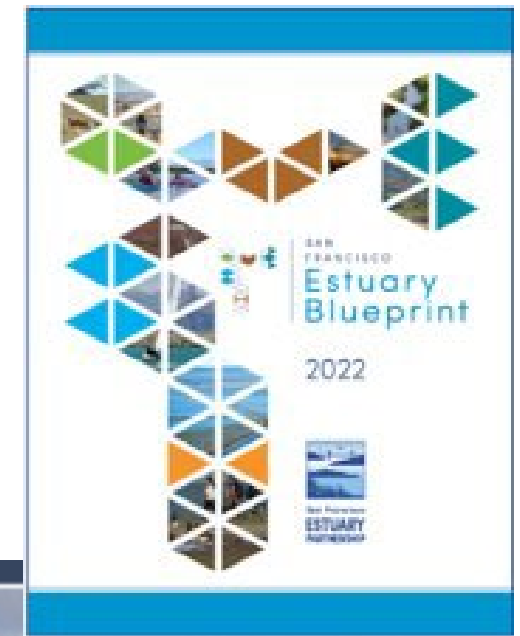
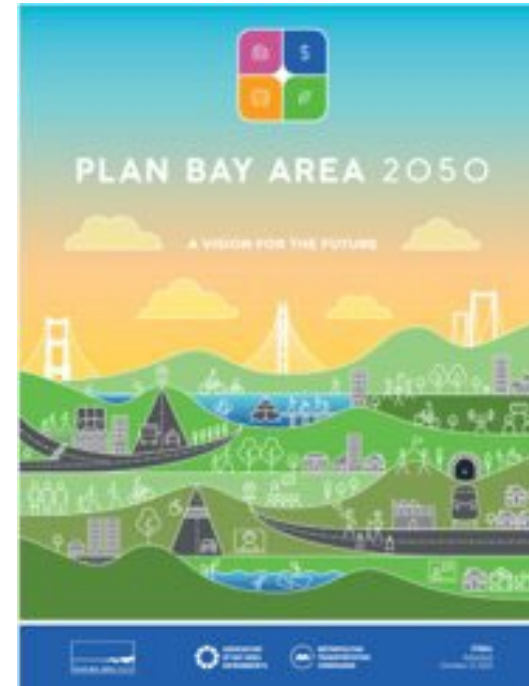
Partnership in Action

What do
we mean
by nature-
based
solutions?

"Nature-based Solutions leverage nature and the power of healthy ecosystems to protect people, optimize infrastructure and safeguard a stable and biodiverse future" - International Union for the Conservation of Nature and Natural Resources (IUCN)

Why Nature-based Solutions (NbS)?

- Increasing urgency to advance projects using innovative approaches that support multiple benefits – people, nature, communities
- Regional Guidance
 - Plan Bay Area 2050, Estuary Blueprint, Bay Adapt Joint Platform
- State and Federal Guidance
 - Executive Orders



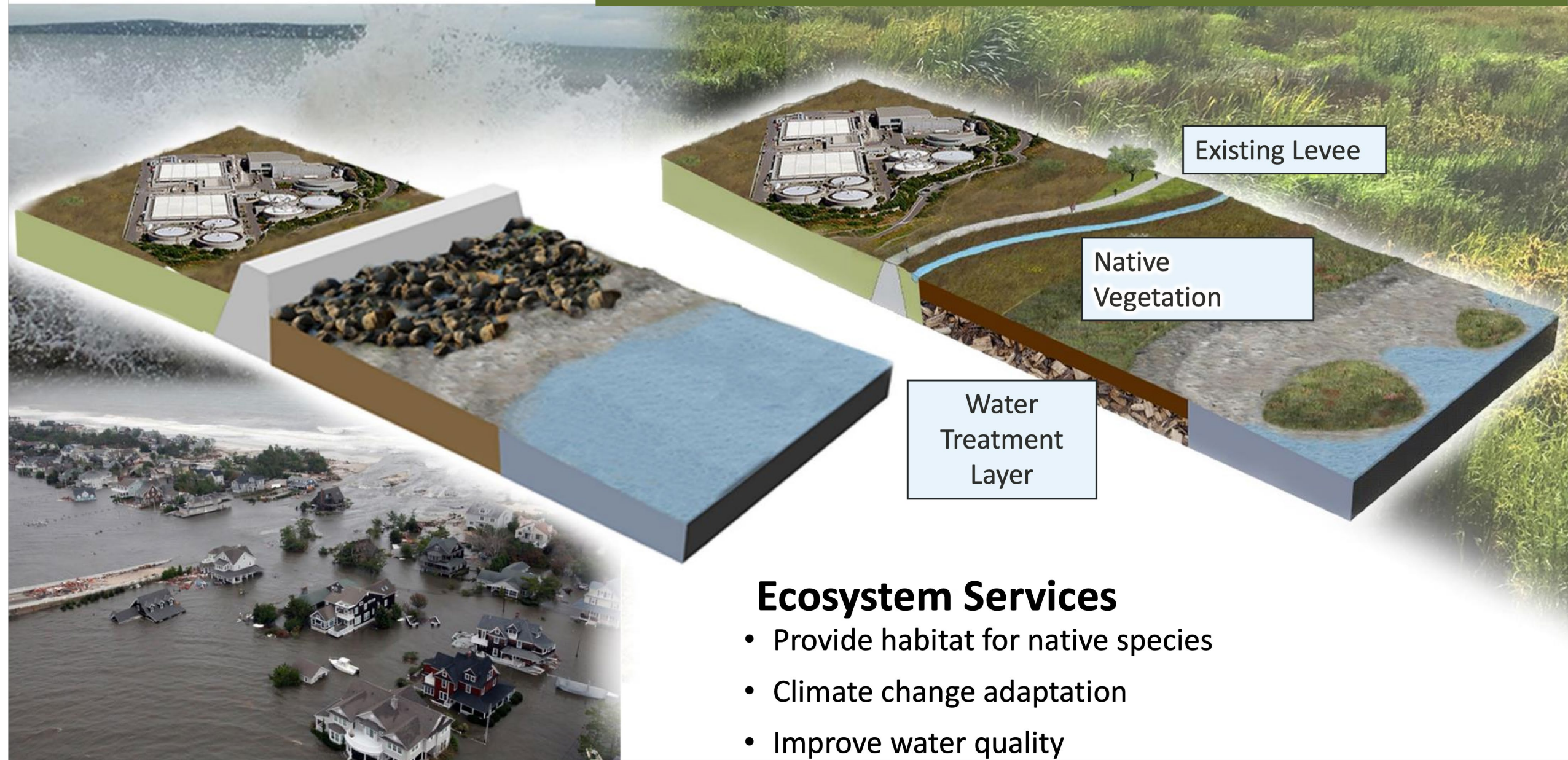
Types of Shoreline NbS

- Natural habitats such as tidal marshes, tidal flats, sandy beaches, eelgrass and oyster beds
- Hybrid approaches such as "living seawalls"
- "Ecotone" and "horizontal" levees



CONVENTIONAL LEVEES & SEA WALLS

HORIZONTAL LEVEE SOLUTION



Ecosystem Services

- Provide habitat for native species
- Climate change adaptation
- Improve water quality

Reimagining
Wastewater
as a Resource



Reimagining Wetlands for People and Nature



SFEP's Work on NBS

Regional Scale

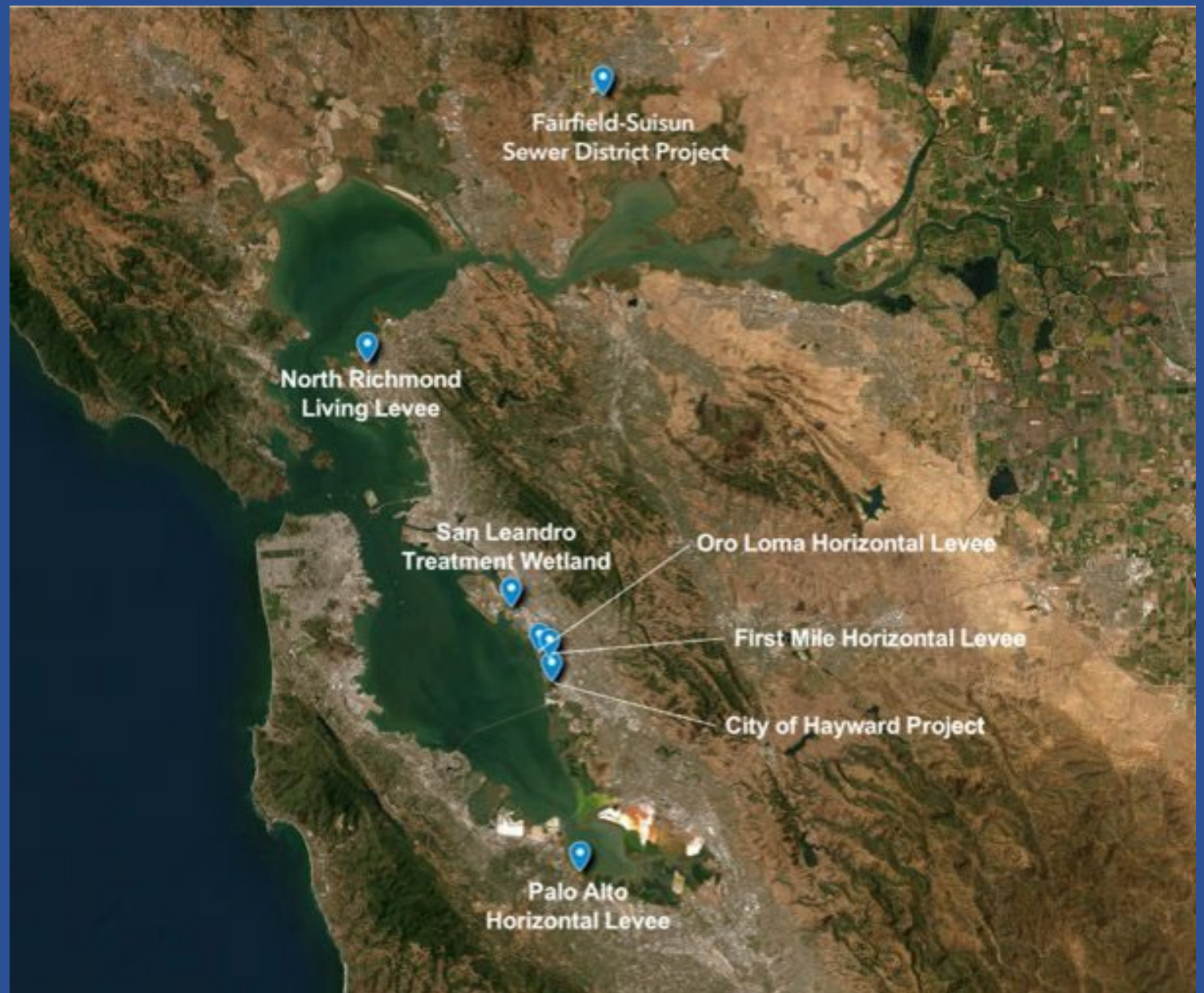
- Technology transfer & convenings
- Address barriers to implementation – funding, regulatory, governance

Local Scale

- Advance on the ground projects in partnership with local jurisdictions and communities



We partner
with
communities
around the
region



Oro Loma Horizontal Levee

- Pilot project built in 2015 to study water quality improvement opportunities
- Partnership between UC Berkeley, Valley Water, Oro Loma Sanitary District, SF Estuary Institute, Save The Bay, East Bay Dischargers Authority, SFEP
- Findings show significant removal of nutrients and contaminants of emerging concern



Project Highlights

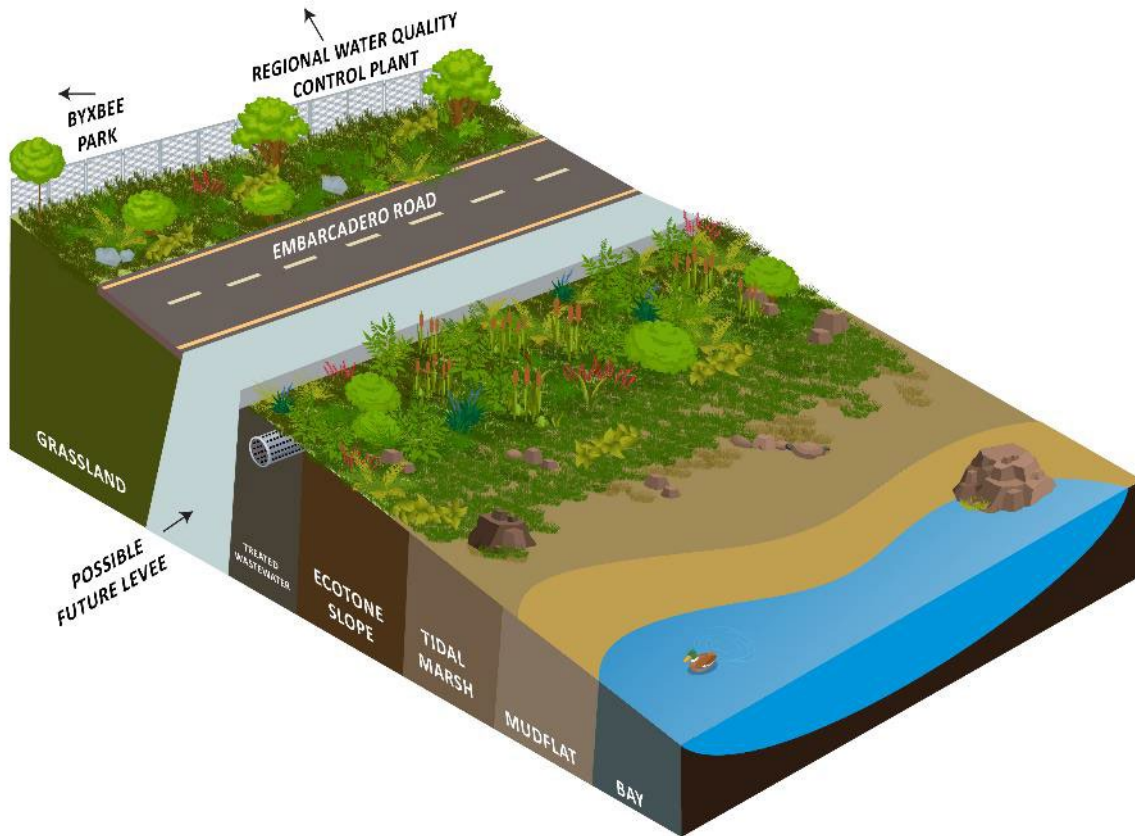
- **First horizontal levee** with treated wastewater conveyance directly to the SF Bay
- **Implements Estuary Blueprint** Task 3-1, 4-1, 4-2 – focused on design and implementation of nature-based shoreline adaptation projects
- **Innovative** design, permitting and construction strategies
- **Paves the way** for future horizontal levee projects regionally
- **Funding** from US EPA Region 9 WQIF and Climate Ready Estuaries, State Coastal Conservancy, City of Palo Alto



Expected Construction start date – July 2024



Palo Alto Horizontal Levee – Project Goals



- Improve habitat along the perimeter of Harbor Marsh.
- Adapt to sea level rise and coordinate with future larger levee improvement project (i.e., SAFER Bay/Shoreline Study).
- Maintain public access to the existing trail system while providing opportunities for compatible low-impact recreation, increased social infrastructure, and educational opportunities on sea level rise.
- Ensure perspectives of marginalized communities are incorporated into social infrastructure and educational components.
- Provide polishing treatment to discharged treated wastewater.

Project Timeline



Key Implementation Challenges

PACE AND
SCALE

REGULATORY

GOVERNANCE

KEEPING
COMMUNITIES
AT THE CENTER

Thank you!

Caitlin Sweeney, Director

caitlin.sweeney@sfestuary.org

Heidi Nutters, Senior Program Manager

heidi.nutters@sfestuary.org

