



DRAFT STATUTORILY REQUIRED PLAN MAPS

MAY 2021



ASSOCIATION
OF BAY AREA
GOVERNMENTS



METROPOLITAN
TRANSPORTATION
COMMISSION

Association of Bay Area Governments

375 Beale Street, Suite 700

San Francisco, CA 94105-2066

www.abag.ca.gov | 415.820.7900

Metropolitan Transportation Commission

375 Beale Street, Suite 800

San Francisco, CA 94105-2066

www.mtc.ca.gov | 415.778.6700

Metropolitan Transportation Commission

Alfredo Pedroza, Chair
Napa County and Cities

Nick Josefowitz, Vice Chair
San Francisco Mayor's Appointee

Margaret Abe-Koga
Cities of Santa Clara County

Eddie H. Ahn
San Francisco Bay Conservation and Development Commission

David Canepa
San Mateo County

Cindy Chavez
Santa Clara County

Damon Connolly
Marin County and Cities

Carol Dutra-Vernaci
Cities of Alameda County

Dina El-Tawansy
California State Transportation Agency (CalSTA)

Victoria Fleming
Sonoma County and Cities

Dorene M. Giacopini
U.S. Department of Transportation

Federal D. Glover
Contra Costa County

Sam Liccardo
San José Mayor's Appointee

Nate Miley
Alameda County

Gina Papan
Cities of San Mateo County

David Rabbitt
Association of Bay Area Governments

Hillary Ronen
City and County of San Francisco

Libby Schaaf
Oakland Mayor's Appointee

James P. Spering
Solano County and Cities

Amy R. Worth
Cities of Contra Costa County

Vacant
U.S. Department of Housing and Urban Development

Association of Bay Area Governments

Jesse Arreguín, President
Mayor, City of Berkeley

Belia Ramos, Vice President
Supervisor, County of Napa

David Rabbitt, Immediate Past President
Supervisor, County of Sonoma

County Representatives

Candace Andersen
Supervisor, County of Contra Costa

David Canepa
Supervisor, County of San Mateo

Keith Carson
Supervisor, County of Alameda

Cindy Chavez
Supervisor, County of Santa Clara

Otto Lee
Supervisor, County of Santa Clara

Gordon Mar
Supervisor, City and County of San Francisco

Rafael Mandelman
Supervisor, City and County of San Francisco

Nate Miley
Supervisor, County of Alameda

Karen Mitchoff
Supervisor, County of Contra Costa

Stephanie Moulton-Peters
Supervisor, County of Marin

James P. Spering
Supervisor, County of Solano

Vacant
County of San Mateo

City Representatives

Nikki Fortunato Bas
Councilmember, City of Oakland

London Breed
Mayor, City and County of San Francisco

Tom Butt
Mayor, City of Richmond

Pat Eklund
Mayor, City of Novato

Maya Esparza
Councilmember, City of San José

Carroll Fife
Councilmember, City of Oakland

Neysa Fligor
Mayor, City of Los Altos

Leon Garcia
Mayor, City of American Canyon

Liz Gibbons
Mayor, City of Campbell

Giselle Hale
Vice Mayor, City of Redwood City

Barbara Halliday
Mayor, City of Hayward

Rich Hillis
Planning Director, City and County of San Francisco

Dave Hudson
Mayor, City of San Ramon

Matthew Mahan
Councilmember, City of San José

Raul Peralez
Councilmember, City of San José

Carlos Romero
Mayor, City of East Palo Alto

Loren Taylor
Councilmember, City of Oakland

Lori Wilson
Mayor, City of Suisun City

Vacant
Cities in Sonoma County

Vacant
City and County of San Francisco (Mayor's Appointee)

Advisory Member

Jayne Battey
Board Member, San Francisco Bay Regional Water Quality Control Board

Draft Plan Bay Area 2050: Statutorily Required Plan Maps

Project Staff

Dave Vautin

Plan Bay Area 2050 Project Manager

Raleigh McCoy

Statutorily Required Maps Project Manager

Peter Beeler and Joshua Croff

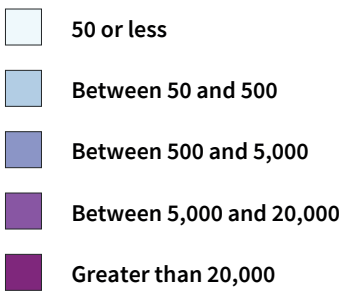
GIS Analysis and Cartography

Acknowledgements

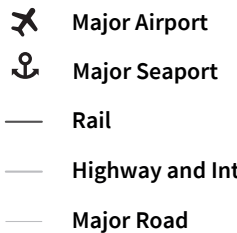
Cover Design

Miguel Osorio

MAP 1
Households per Square Mile, 2050



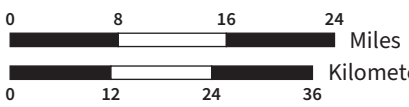
REGIONAL TRANSPORTATION



SCALE

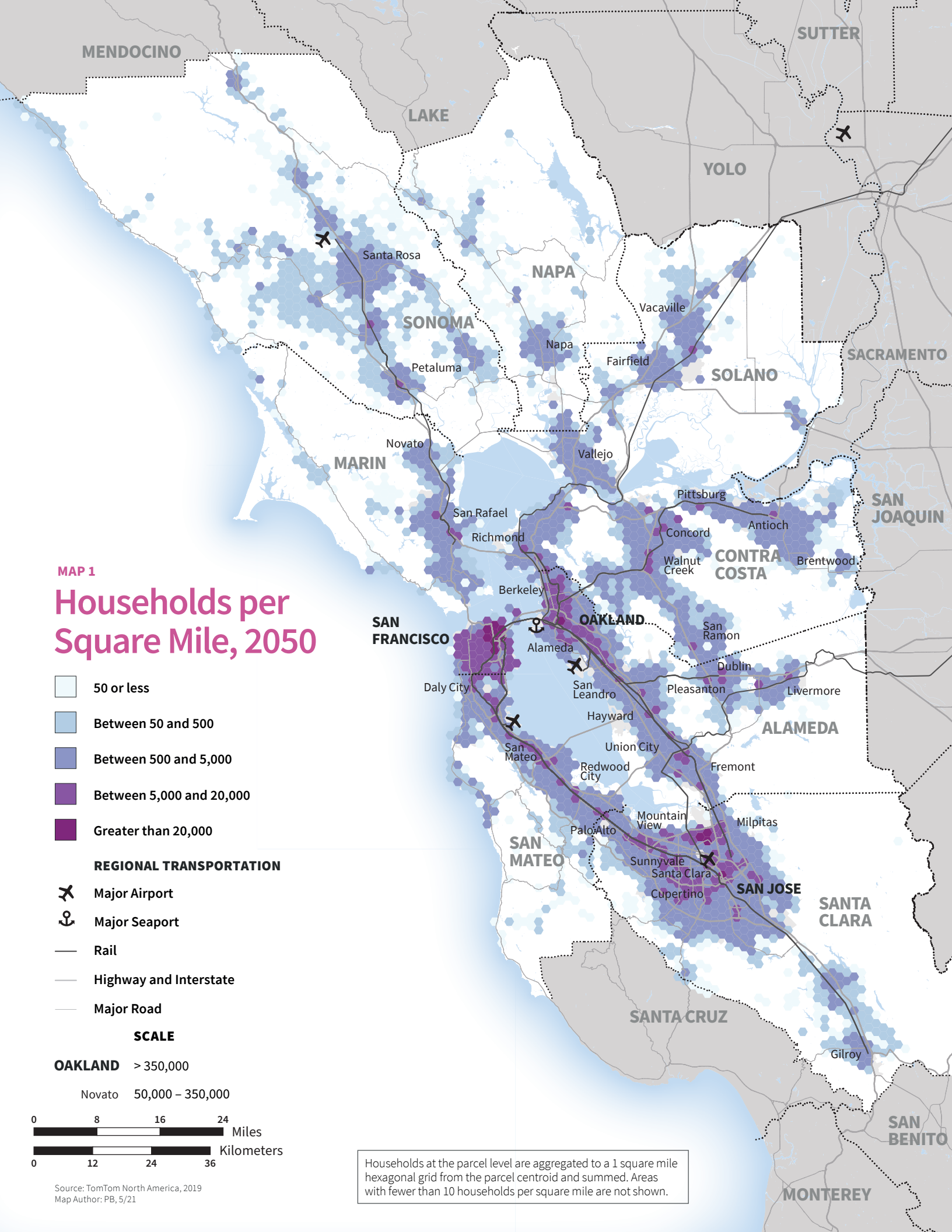
OAKLAND > 350,000

Novato 50,000 – 350,000



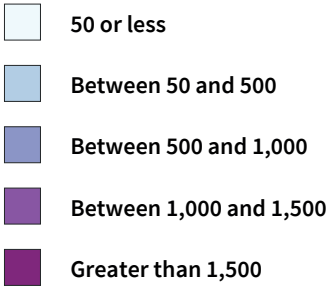
Source: TomTom North America, 2019
 Map Author: PB, 5/21

Households at the parcel level are aggregated to a 1 square mile hexagonal grid from the parcel centroid and summed. Areas with fewer than 10 households per square mile are not shown.



MAP 2

Change in Households per Square Mile, 2015–2050



REGIONAL TRANSPORTATION

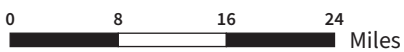
- Major Airport
- Major Seaport

- Rail
- Highway and Interstate
- Major Road

SCALE

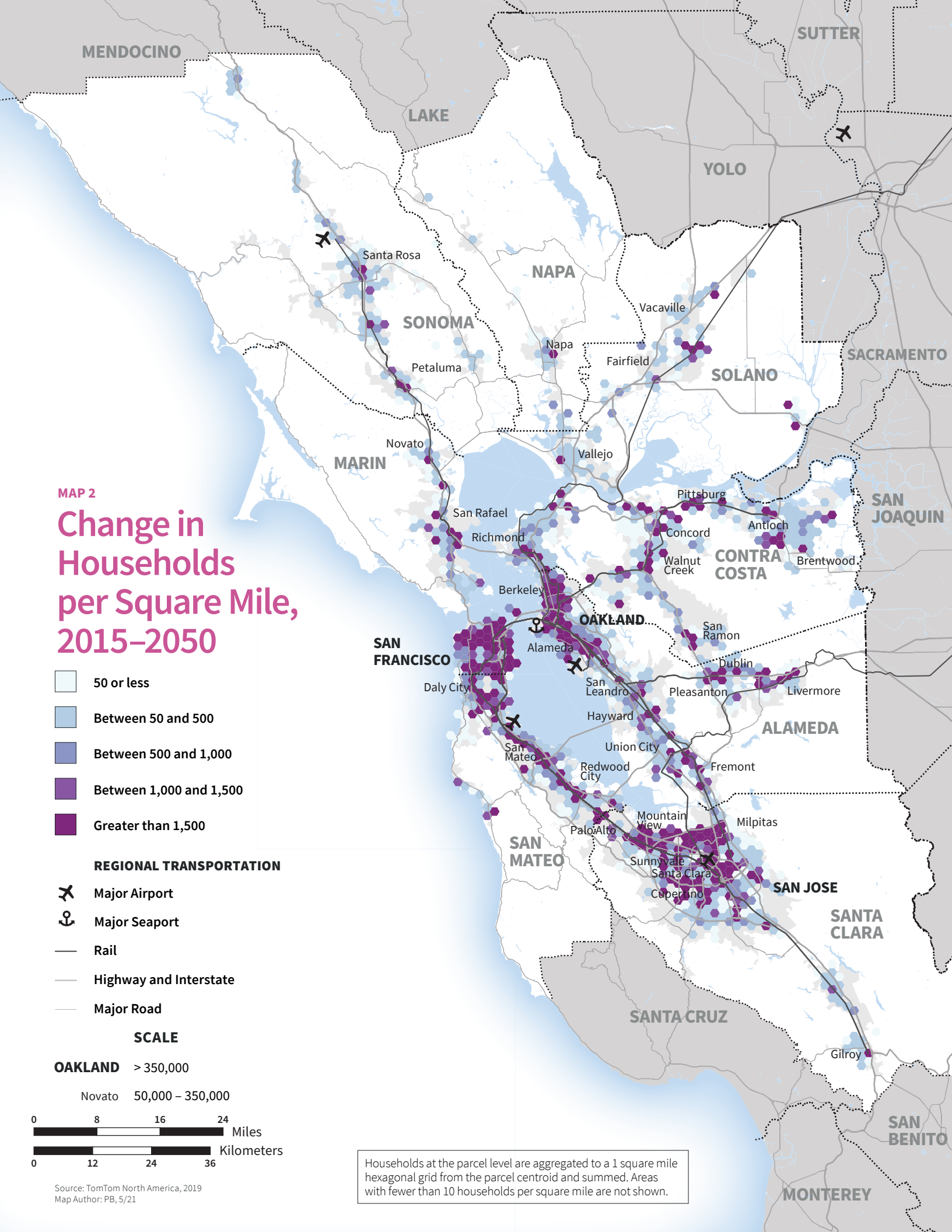
OAKLAND > 350,000

Novato 50,000 – 350,000



Source: TomTom North America, 2019
 Map Author: PB, 5/21

Households at the parcel level are aggregated to a 1 square mile hexagonal grid from the parcel centroid and summed. Areas with fewer than 10 households per square mile are not shown.



MAP 3

Jobs per Square Mile, 2050

- 50 or less
- Between 50 and 1,000
- Between 1,000 and 5,000
- Between 5,000 and 25,000
- Greater than 25,000

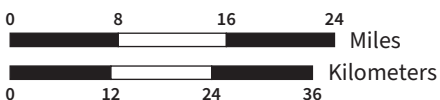
REGIONAL TRANSPORTATION

- Major Airport
- Major Seaport
- Rail
- Highway and Interstate
- Major Road

SCALE

OAKLAND > 350,000

Novato 50,000 – 350,000



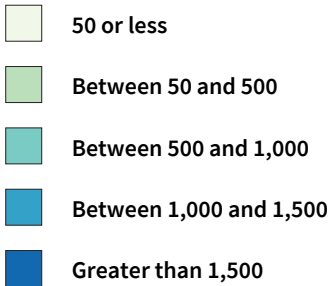
Source: TomTom North America, 2019
Map Author: PB, 5/21

Jobs at the parcel level are aggregated to a 1 square mile hexagonal grid from the parcel centroid and summed. Areas with fewer than 10 jobs per square mile are not shown. Jobs that are done remotely are assigned to the office location, as opposed to the employee's remote work site.

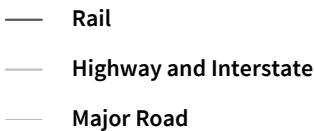
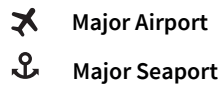


MAP 4

Change in Jobs per Square Mile, 2015–2050



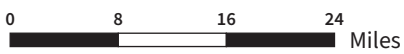
REGIONAL TRANSPORTATION



SCALE

OAKLAND > 350,000

Novato 50,000 – 350,000



Source: TomTom North America, 2019
Map Author: PB, 5/21

Jobs at the parcel level are aggregated to a 1 square mile hexagonal grid from the parcel centroid and summed. Areas with fewer than 10 jobs per square mile are not shown. Jobs that are done remotely are assigned to the office location, as opposed to the employee's remote work site.

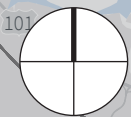
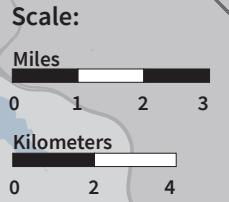


MAP 5
**Resource
 Lands:
 Agriculture**
 Alameda County

- Farmland**
 Includes prime farmland, farmland of statewide & local importance, and unique farmland
- Grazing Lands**
 Land on which the existing vegetation is suited to the grazing of livestock

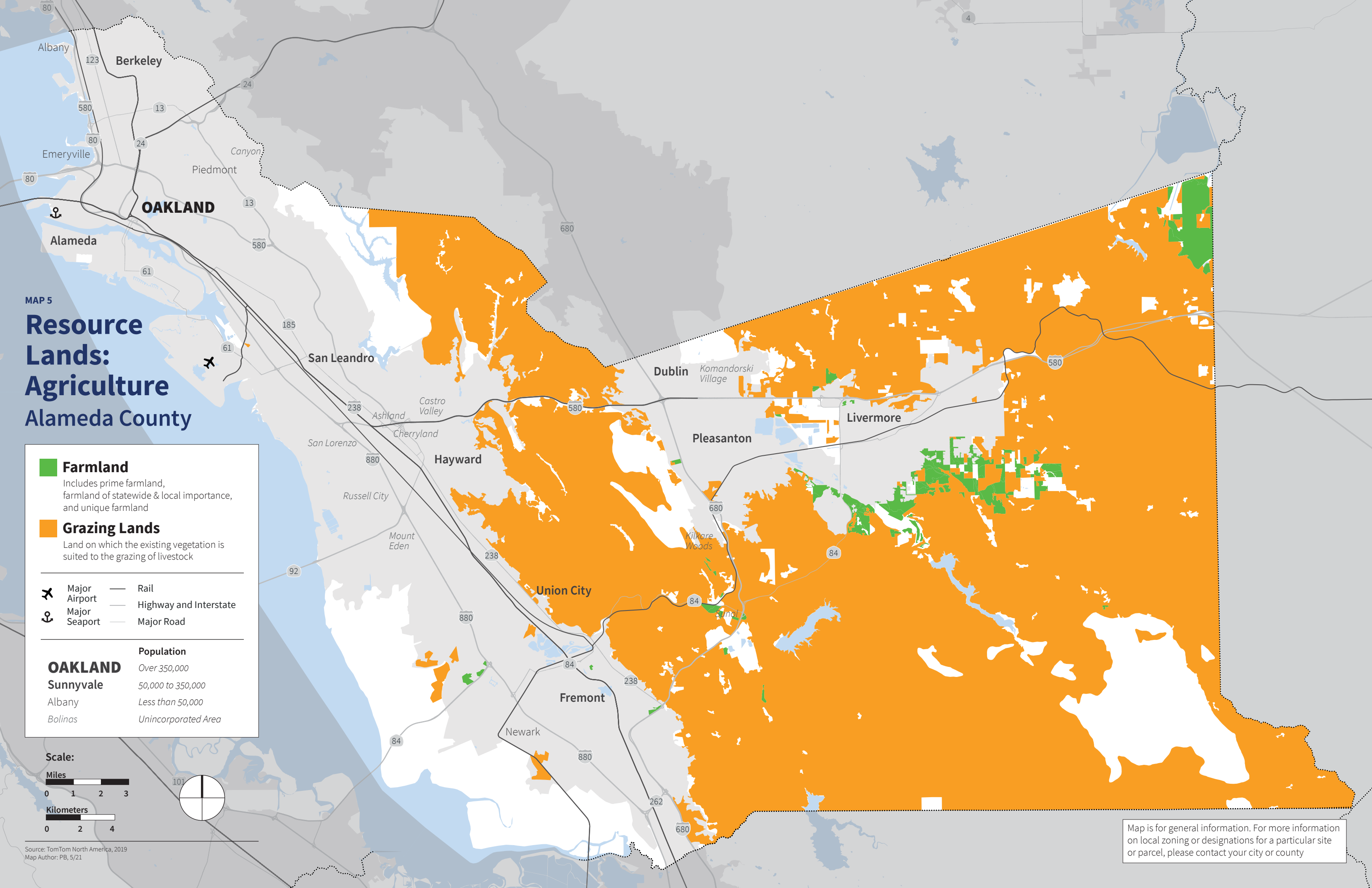
- Major Airport
- Major Seaport
- Rail
- Highway and Interstate
- Major Road

OAKLAND	Population
Sunnyvale	Over 350,000
Albany	50,000 to 350,000
Bolinas	Less than 50,000
	Unincorporated Area



Source: TomTom North America, 2019
 Map Author: PB, 5/21

Map is for general information. For more information on local zoning or designations for a particular site or parcel, please contact your city or county



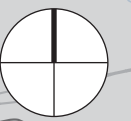
MAP 6
**Resource
 Lands:
 Agriculture**
 Contra Costa County

- Farmland**
 Includes prime farmland, farmland of statewide & local importance, and unique farmland
- Grazing Lands**
 Land on which the existing vegetation is suited to the grazing of livestock

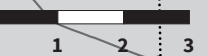
- Major Airport
- Major Seaport
- Rail
- Highway and Interstate
- Major Road

OAKLAND	Population
Sunnyvale	Over 350,000
Albany	50,000 to 350,000
Bolinas	Less than 50,000
	Unincorporated Area

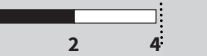
Source: TomTom North America, 2019
 Map Author: PB, 5/21



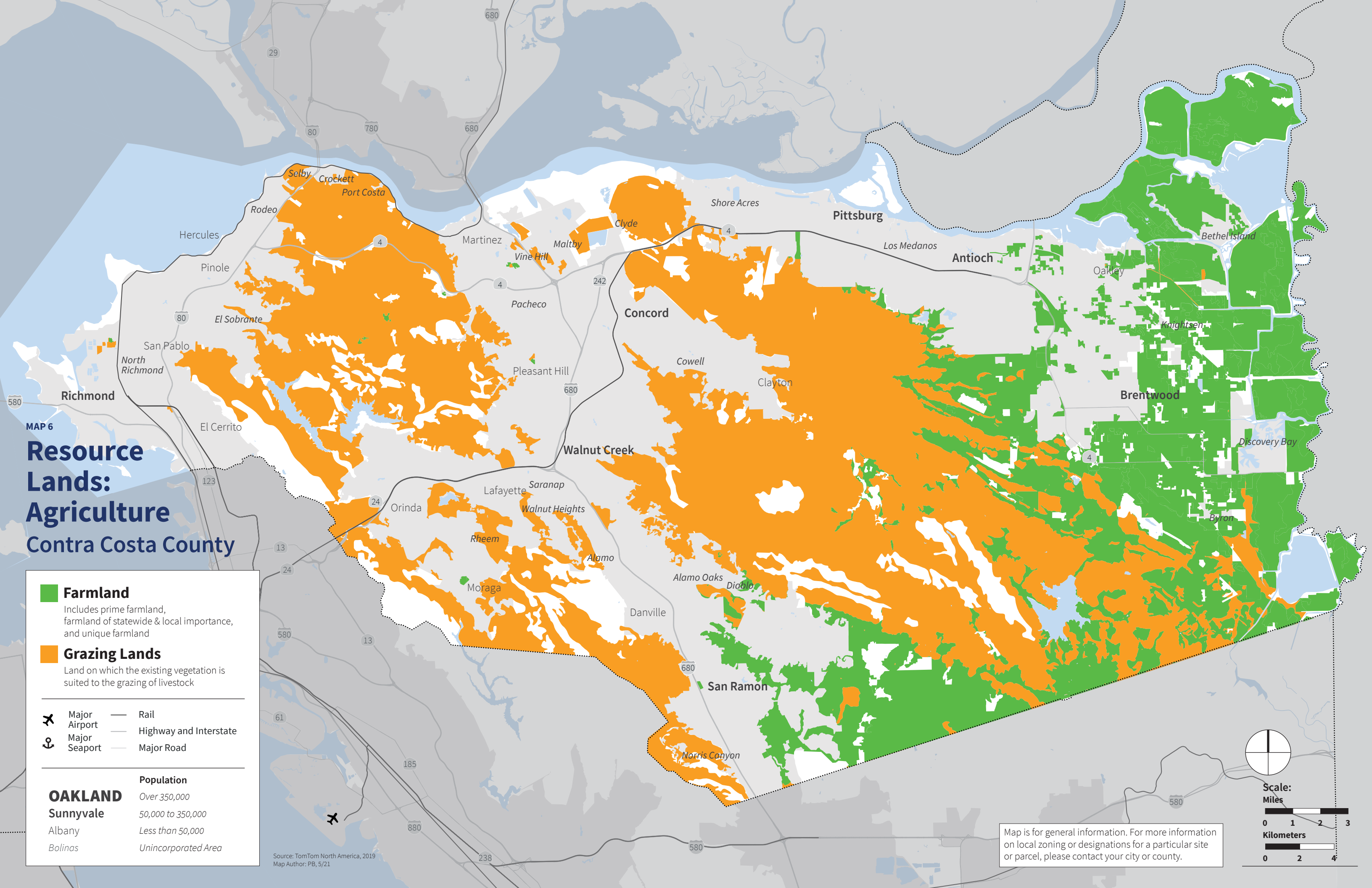
Scale:
 Miles



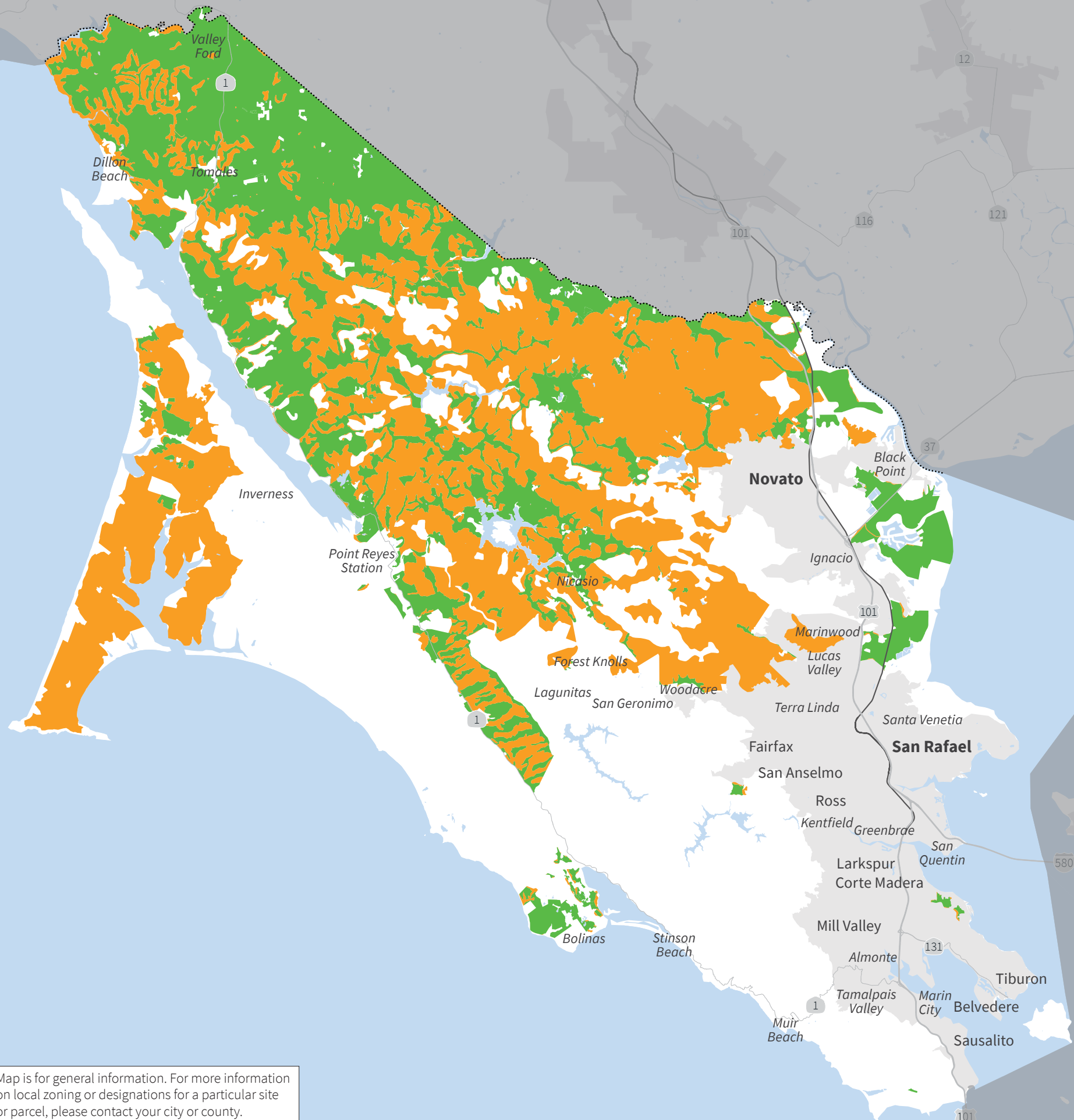
Kilometers



Map is for general information. For more information on local zoning or designations for a particular site or parcel, please contact your city or county.



MAP 7
**Resource Lands:
 Agriculture
 Marin County**



Farmland
 Includes prime farmland, farmland of statewide & local importance, and unique farmland

Grazing Lands
 Land on which the existing vegetation is suited to the grazing of livestock

✈ Major Airport
 ⚓ Major Seaport

— Rail
 — Highway and Interstate
 — Major Road

OAKLAND Over 350,000
Sunnyvale 50,000 to 350,000
 Albany Less than 50,000
 Bolinas Unincorporated Area

Map is for general information. For more information on local zoning or designations for a particular site or parcel, please contact your city or county.

Scale:
 Miles
 0 1 2 3
 Kilometers
 0 2 4

Source: TomTom North America, 2019
 Map Author: PB, 5/21

Cowell

Alamo Oaks

Danville

MAP 8
**Resource
 Lands:
 Agriculture**
 Napa County

Farmland
 Includes prime farmland, farmland of statewide & local importance, and unique farmland

Grazing Lands
 Land on which the existing vegetation is suited to the grazing of livestock

Major Airport **Rail**

Major Seaport **Highway and Interstate**

Major Road

OAKLAND **Population**

Sunnyvale Over 350,000

Albany 50,000 to 350,000

Bolinas Less than 50,000

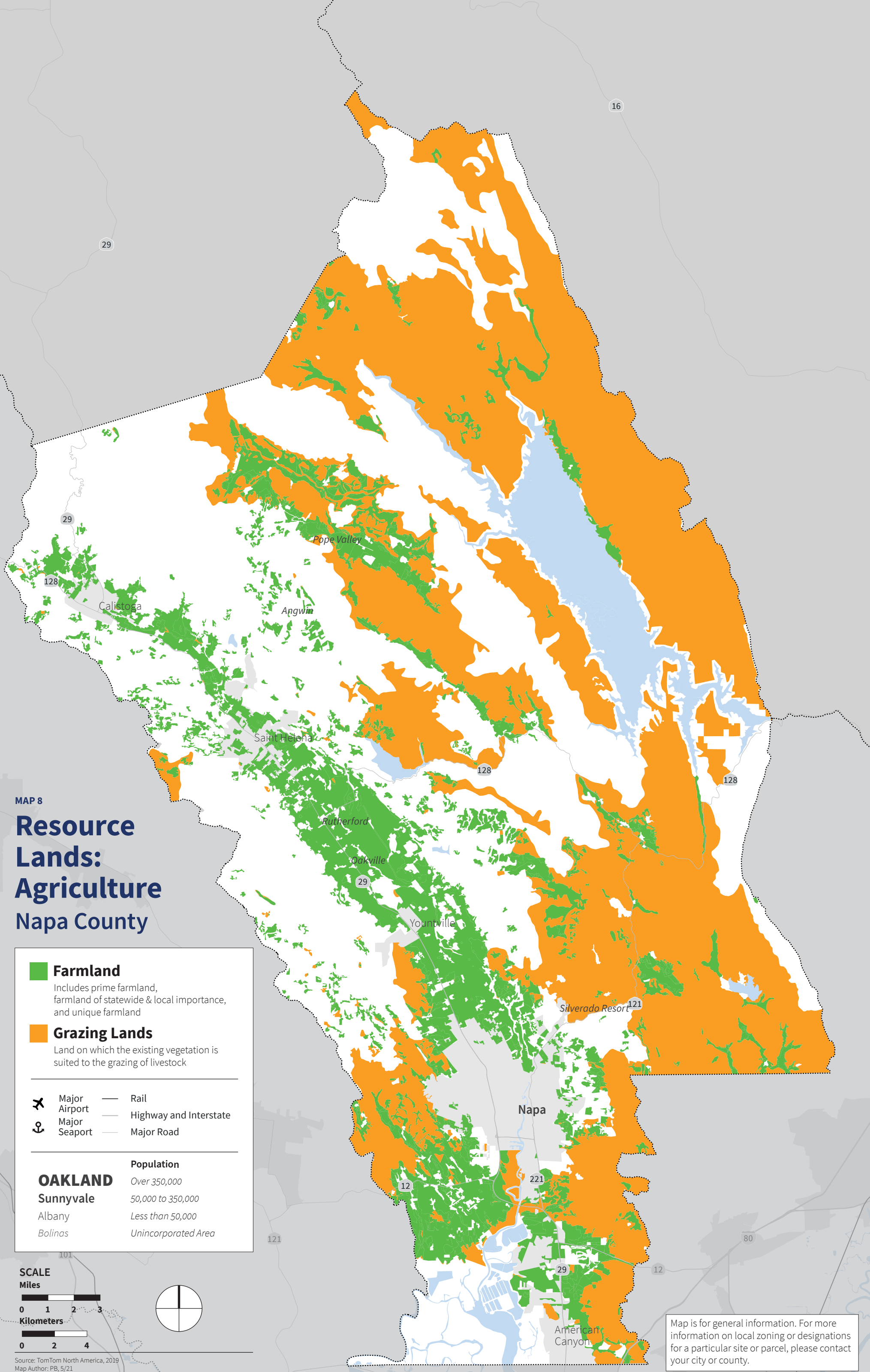
Unincorporated Area Unincorporated Area

SCALE

Miles

Kilometers

Source: TomTom North America, 2019
 Map Author: PB, 5/21



Map is for general information. For more information on local zoning or designations for a particular site or parcel, please contact your city or county.

MAP 9

Resource Lands: Agriculture San Mateo County

Farmland

Includes prime farmland, farmland of statewide & local importance, and unique farmland

Grazing Lands

Land on which the existing vegetation is suited to the grazing of livestock



Major Airport



Major Seaport

— Rail

— Highway and Interstate

— Major Road

OAKLAND

Population

Sunnyvale

50,000 to 350,000

Albany

Less than 50,000

Bolinas

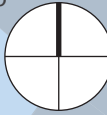
Unincorporated Area

Scale:

Miles



Kilometers

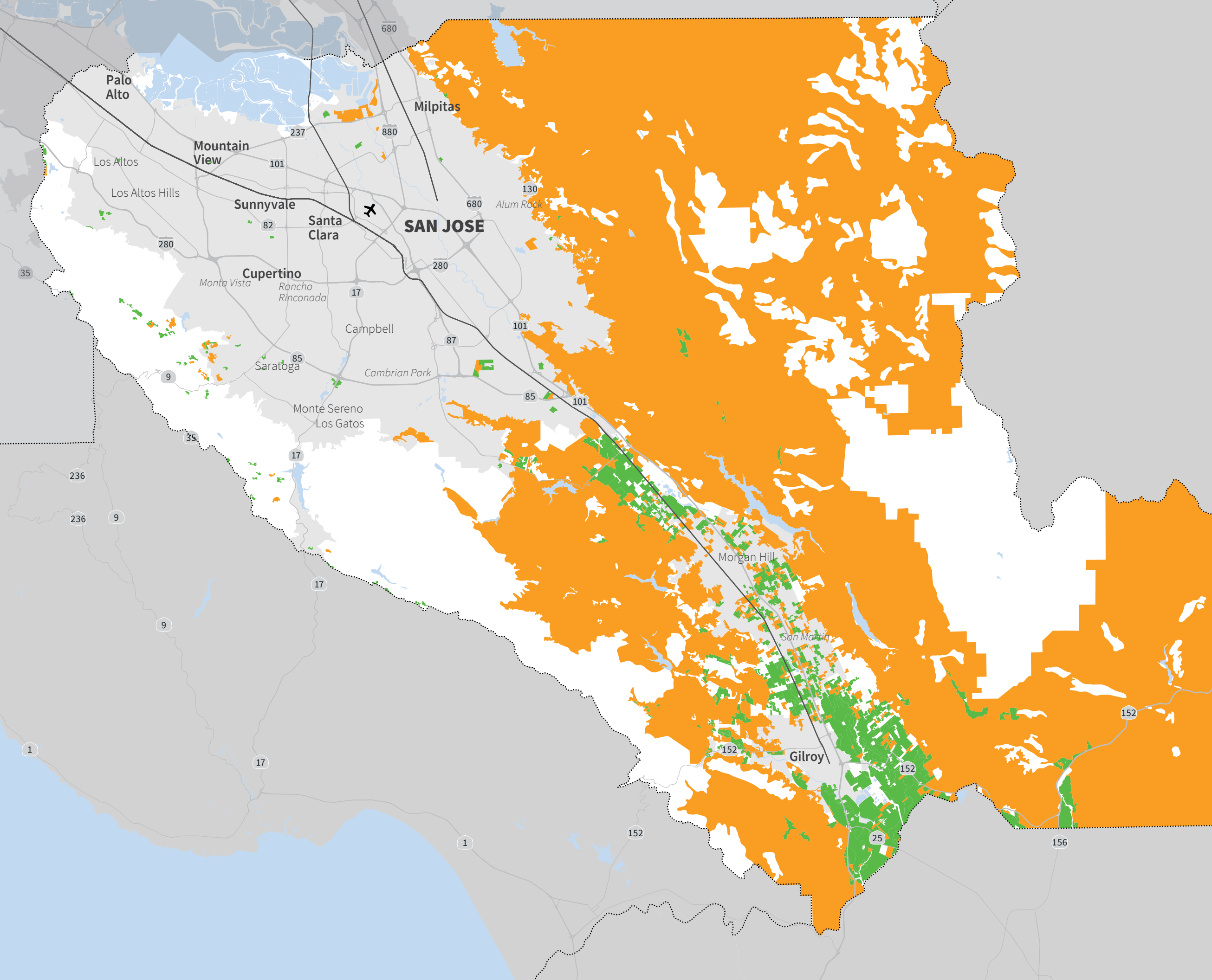


Source: TomTom North America, 2019
Map Author: PB, 5/21

Map is for general information. For more information on local zoning or designations for a particular site or parcel, please contact your city or county.

Resource Lands: Agriculture

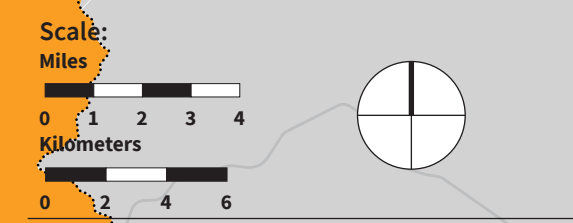
Santa Clara County



- Farmland**
Includes prime farmland, farmland of statewide & local importance, and unique farmland
- Grazing Lands**
Land on which the existing vegetation is suited to the grazing of livestock

- Major Airport
- Major Seaport
- Rail
- Highway and Interstate
- Major Road

Population	
OAKLAND	Over 350,000
Sunnyvale	50,000 to 350,000
Albany	Less than 50,000
Bolinas	Unincorporated Area



Source: TomTom North America, 2019
Map Author: PB, 5/21

Map is for general information. For more information on local zoning or designations for a particular site or parcel, please contact your city or county.

MAP 11

Resource Lands: Agriculture Solano County

Farmland

Includes prime farmland, farmland of statewide & local importance, and unique farmland

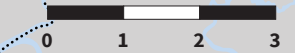
Grazing Lands

Land on which the existing vegetation is suited to the grazing of livestock

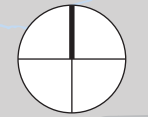
- Major Airport
- Major Seaport
- Rail
- Highway and Interstate
- Major Road

OAKLAND	
Sunnyvale	Over 350,000
Albany	50,000 to 350,000
Bolinas	Less than 50,000
	Unincorporated Area

Scale:
Miles

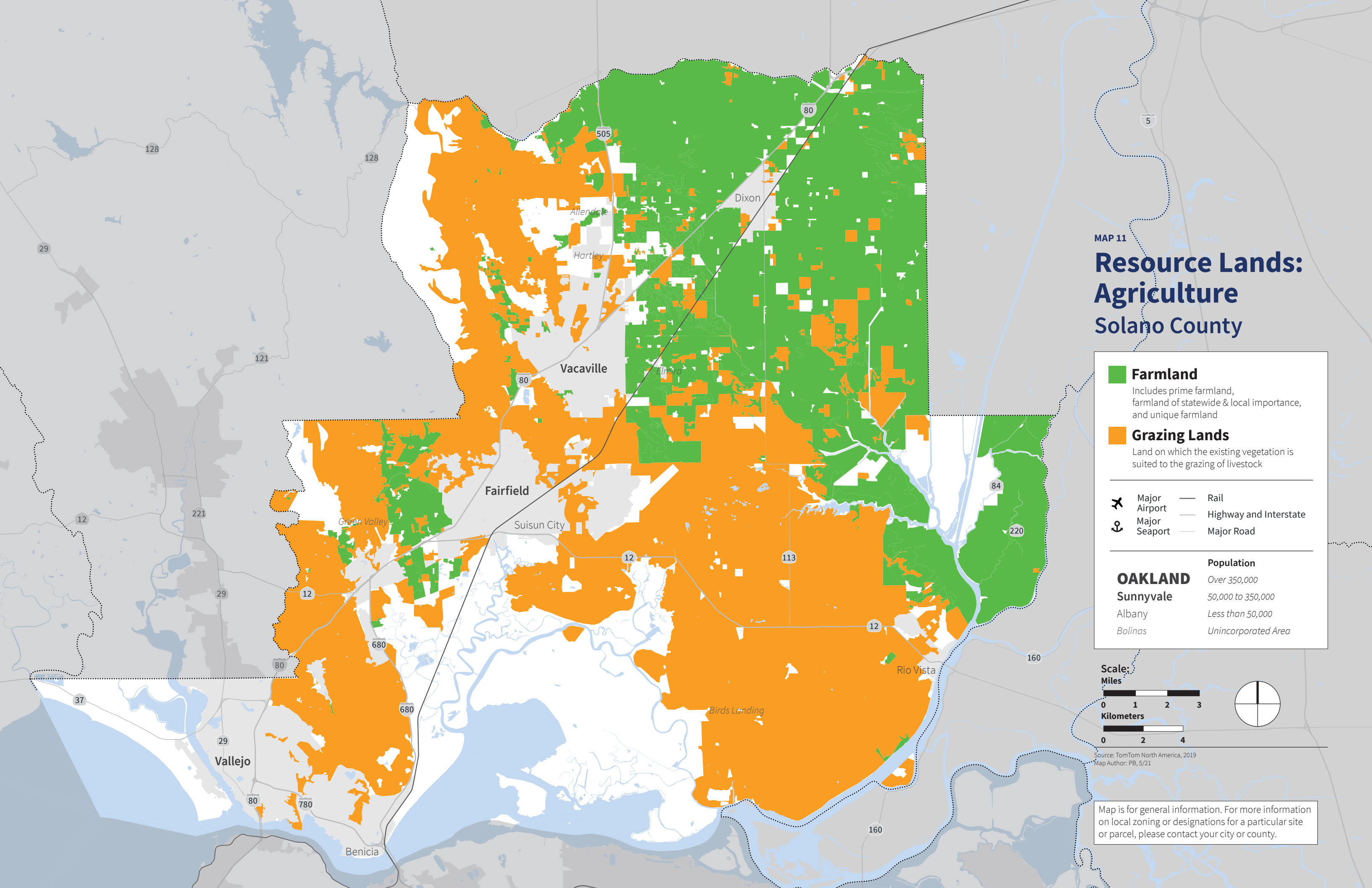


Kilometers



Source: TomTom North America, 2019
Map Author: PB, 5/21

Map is for general information. For more information on local zoning or designations for a particular site or parcel, please contact your city or county.



MAP 12

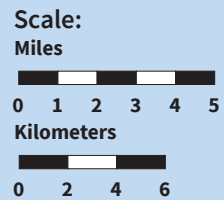
Resource Lands: Agriculture Sonoma County

Farmland
Includes prime farmland, farmland of statewide & local importance, and unique farmland

Grazing Lands
Land on which the existing vegetation is suited to the grazing of livestock

✈ Major Airport
⚓ Major Seaport
— Rail
— Highway and Interstate
— Major Road

OAKLAND	
Sunnyvale	Over 350,000
Albany	50,000 to 350,000
Bolinas	Less than 50,000
	Unincorporated Area



Source: TomTom North America, 2019
Map Author: PB, 5/21

Map is for general information. For more information on local zoning or designations for a particular site or parcel, please contact your city or county.

MAP 13
Natural Lands
 Alameda County

- Conservation Lands**
 Includes CPAD open space, Williamson Act parcels and Conservation Easements
- Critical Habitat**
- Priority Conservation Areas**
- Flood Risk Areas**

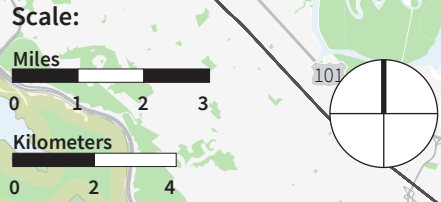
- Major Airport
- Major Seaport
- Rail
- Highway and Interstate
- Major Road

OAKLAND Over 350,000

Sunnyvale 50,000 to 350,000

Albany Less than 50,000

Bolinas Unincorporated Area



Source: TomTom North America, 2019
 Map Author: PB, 5/21

Map is for general information. For more information on local zoning or designations for a particular site or parcel, please contact your city or county

MAP 14
Natural Lands
Contra Costa County

Conservation Lands
 Includes CPAD open space, Williamson Act parcels and Conservation Easements

Critical Habitat

Priority Conservation Areas

Flood Risk Areas

Major Airport **Rail**

Major Seaport **Highway and Interstate**

Major Road

OAKLAND **Population**

Sunnyvale *Over 350,000*

Albany *50,000 to 350,000*

Bolinas *Less than 50,000*

Unincorporated Area

Source: TomTom North America, 2019
 Map Author: PB, 5/21

Map is for general information. For more information on local zoning or designations for a particular site or parcel, please contact your city or county.

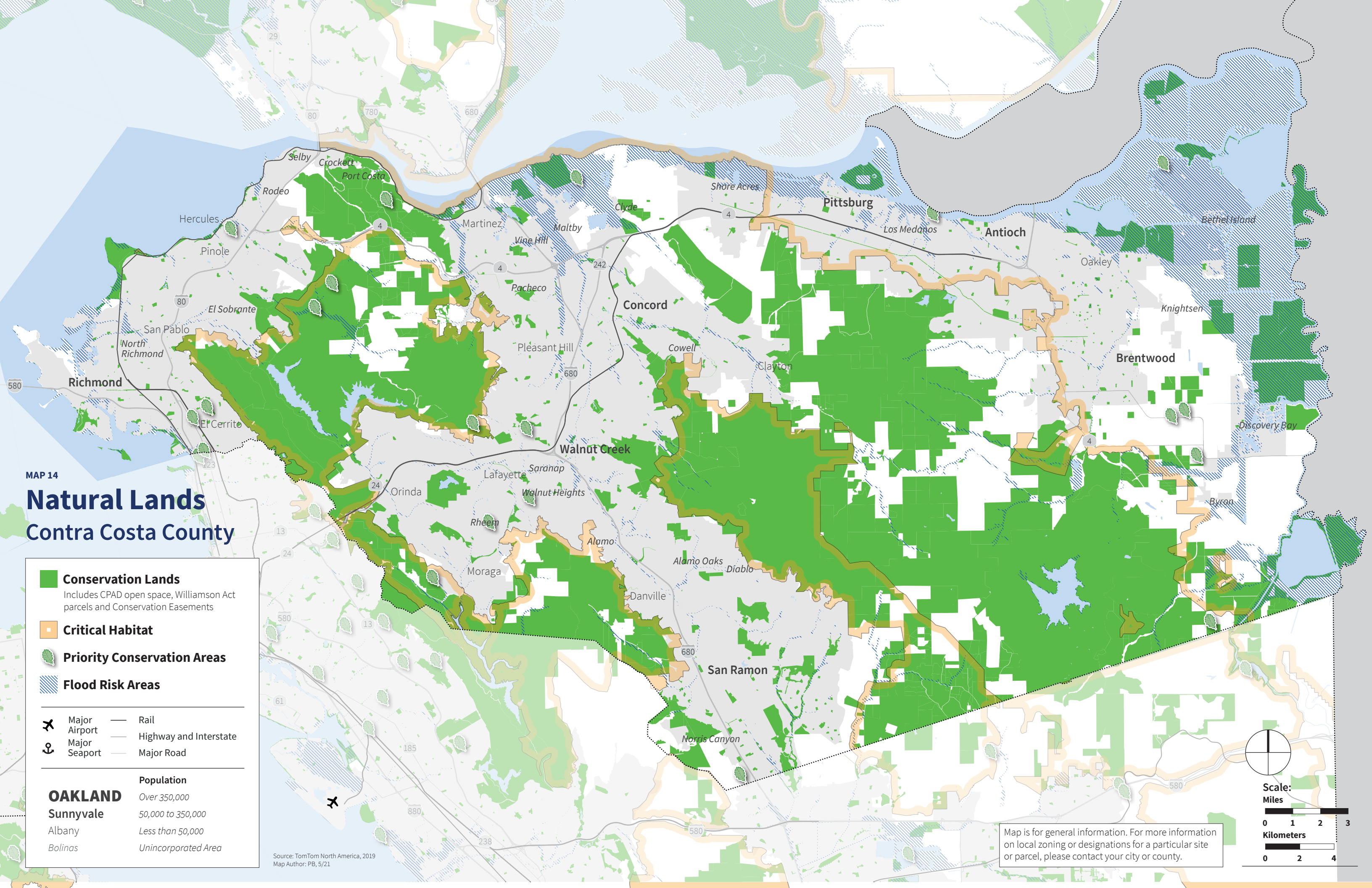
Scale:

Miles

0 1 2 3

Kilometers

0 2 4



MAP 15
**Natural
 Lands**
 Marin County

Conservation Lands
 Includes CPAD open space, Williamson Act parcels and Conservation Easements

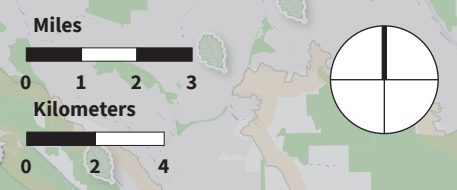
Critical Habitat

Priority Conservation Areas

Flood Risk Areas

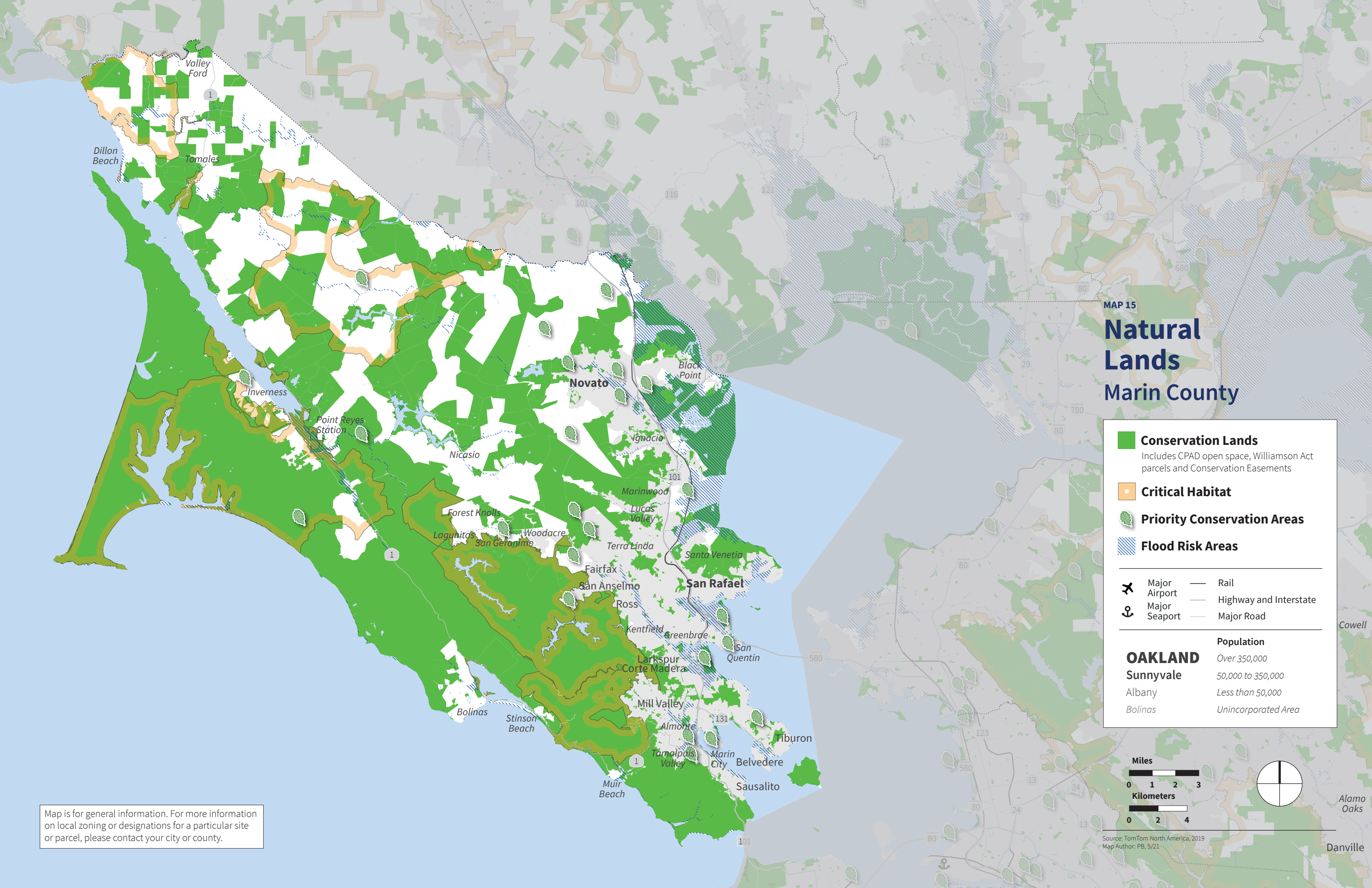
✈ Major Airport — Rail
 ⚓ Major Seaport — Highway and Interstate
 — Major Road

OAKLAND Over 350,000
Sunnyvale 50,000 to 350,000
 Albany Less than 50,000
 Bolinas Unincorporated Area












Map is for general information. For more information on local zoning or designations for a particular site or parcel, please contact your city or county.


Source: TomTom North America, 2019
 Map Author: PB, 5/21



MAP 16
Natural Lands
 Napa County

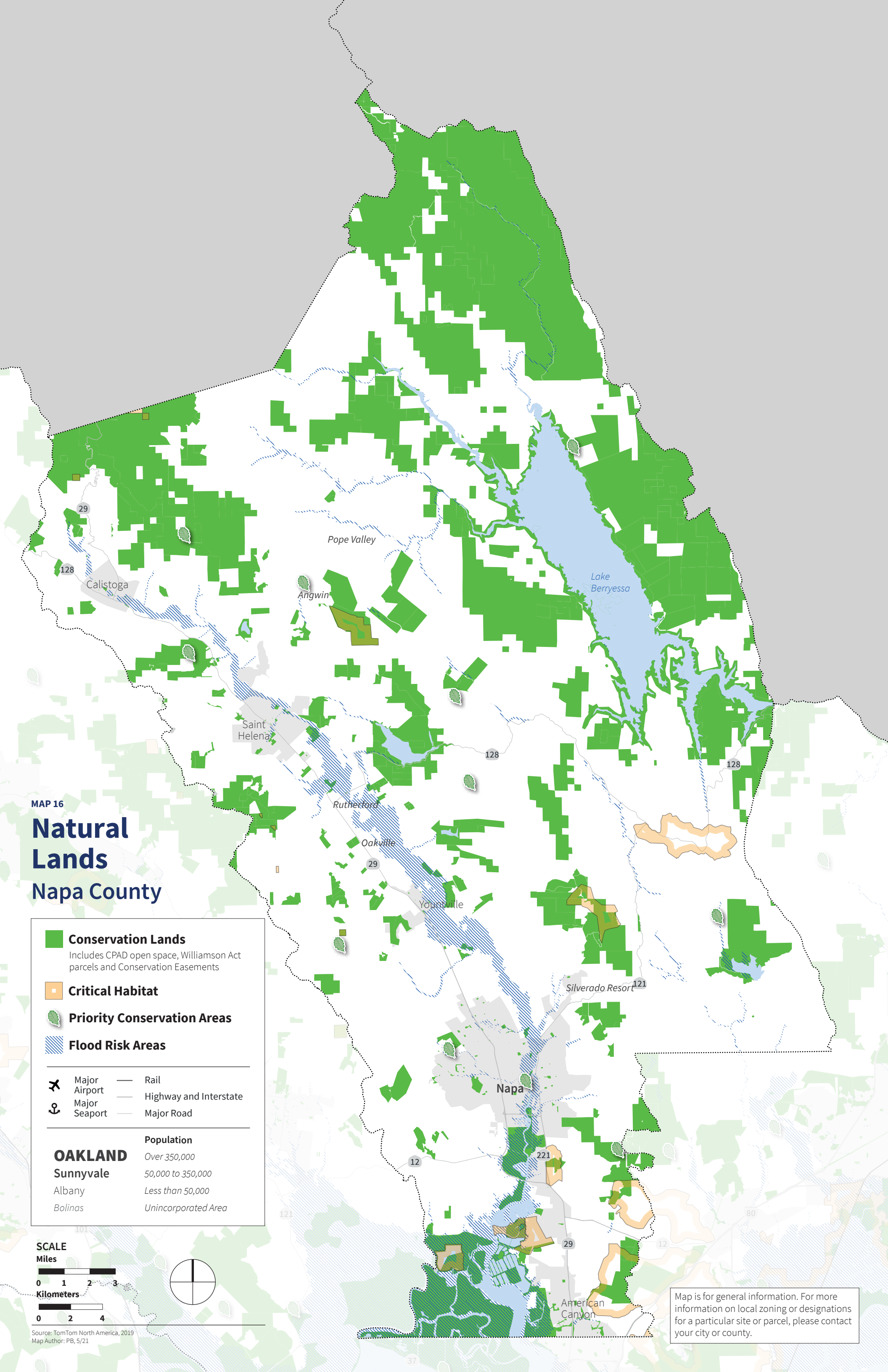
	Conservation Lands Includes CPAD open space, Williamson Act parcels and Conservation Easements
	Critical Habitat
	Priority Conservation Areas
	Flood Risk Areas
	Major Airport
	Major Seaport
	Rail
	Highway and Interstate
	Major Road
OAKLAND	Over 350,000
Sunnyvale	50,000 to 350,000
Albany	Less than 50,000
Bolinas	Unincorporated Area

SCALE
 Miles
 0 1 2 3
 Kilometers
 0 2 4

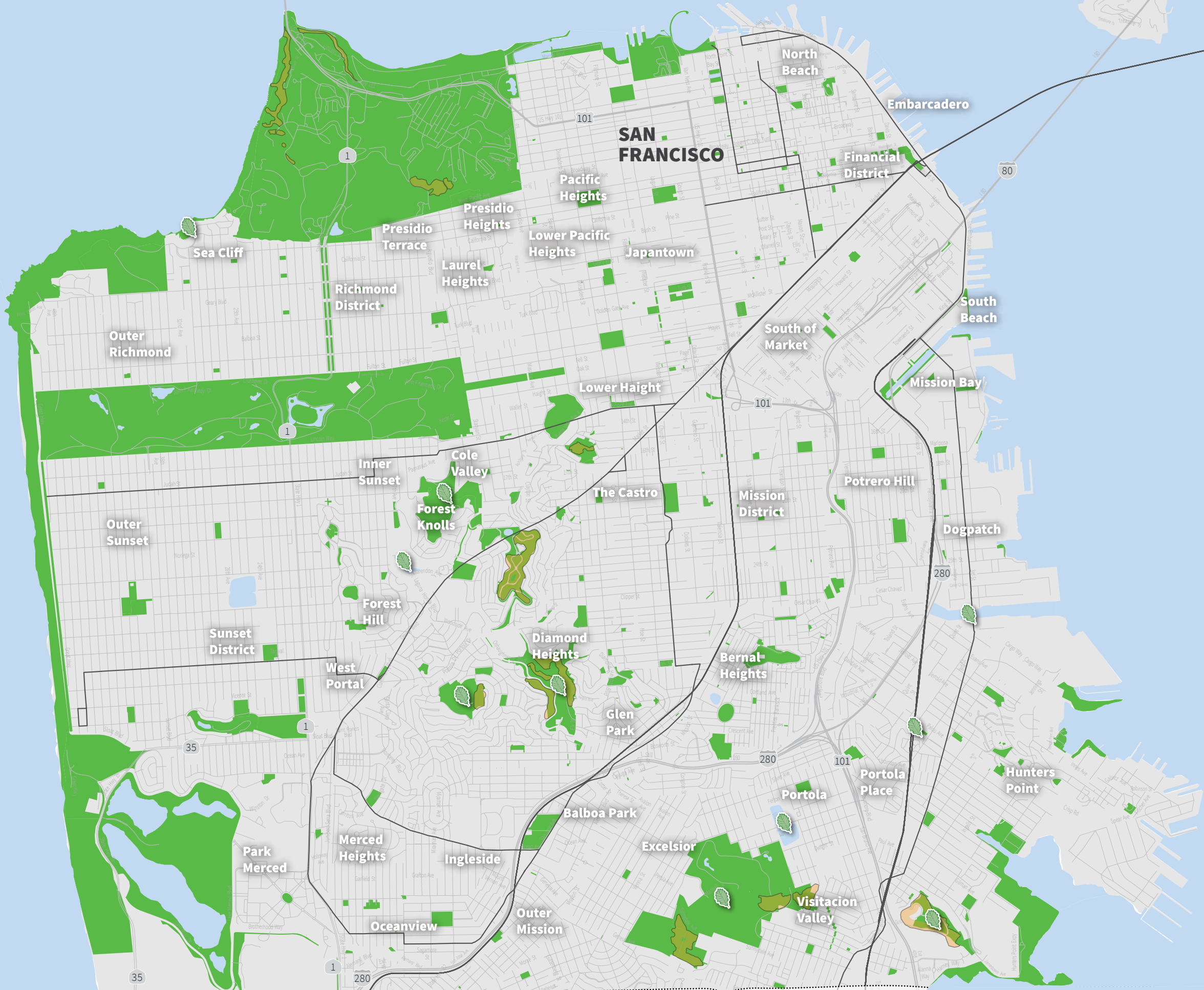


Source: TomTom North America, 2019
 Map Author: PB, 5/21

Map is for general information. For more information on local zoning or designations for a particular site or parcel, please contact your city or county.



Map is for general information. For more information on local zoning or designations for a particular site or parcel, please contact your city or county.

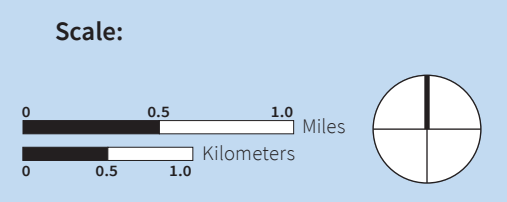


MAP 17
Natural Lands
 City and County of San Francisco

- **Conservation Lands**
Includes CPAD open space, Williamson Act parcels and Conservation Easements
- **Critical Habitat**
- **Priority Conservation Areas**
- Flood Risk Areas**

- Major Airport
- Major Seaport
- Rail
- Highway and Interstate
- Major Road

	Population
OAKLAND	<i>Over 350,000</i>
Sunnyvale	<i>50,000 to 350,000</i>
Albany	<i>Less than 50,000</i>
Bolinas	<i>Unincorporated Area</i>



Source: TomTom North America, 2019
 Map Author: PB, 5/21

Natural Lands San Mateo County

Conservation Lands
Includes CPAD open space, Williamson Act parcels and Conservation Easements

Critical Habitat

Priority Conservation Areas

Flood Risk Areas



Major Airport



Major Seaport



Rail



Highway and Interstate



Major Road

OAKLAND
Sunnyvale

Population

Over 350,000

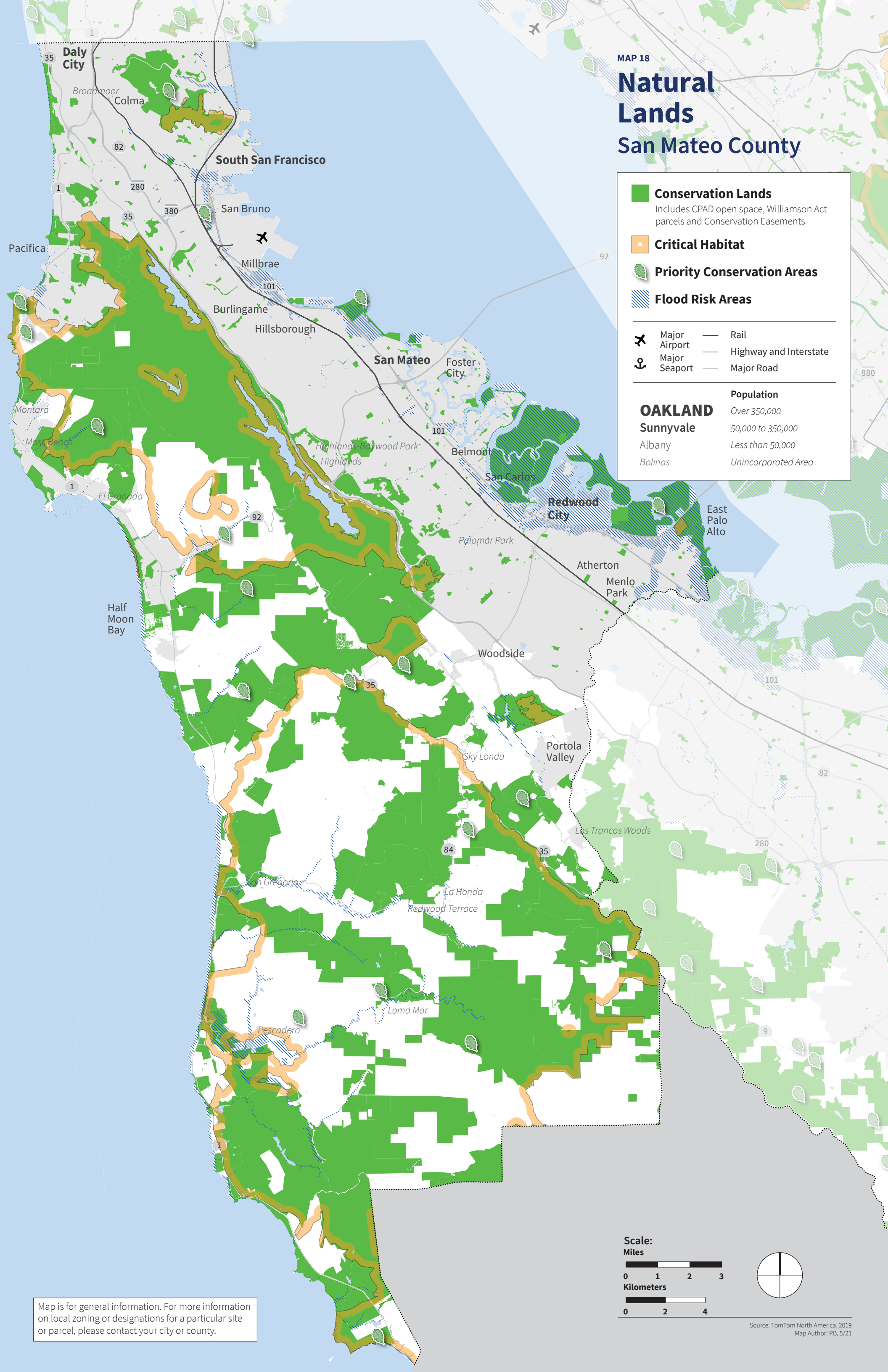
50,000 to 350,000

Less than 50,000

Unincorporated Area

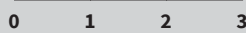
Albany

Bolinas

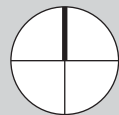


Map is for general information. For more information on local zoning or designations for a particular site or parcel, please contact your city or county.

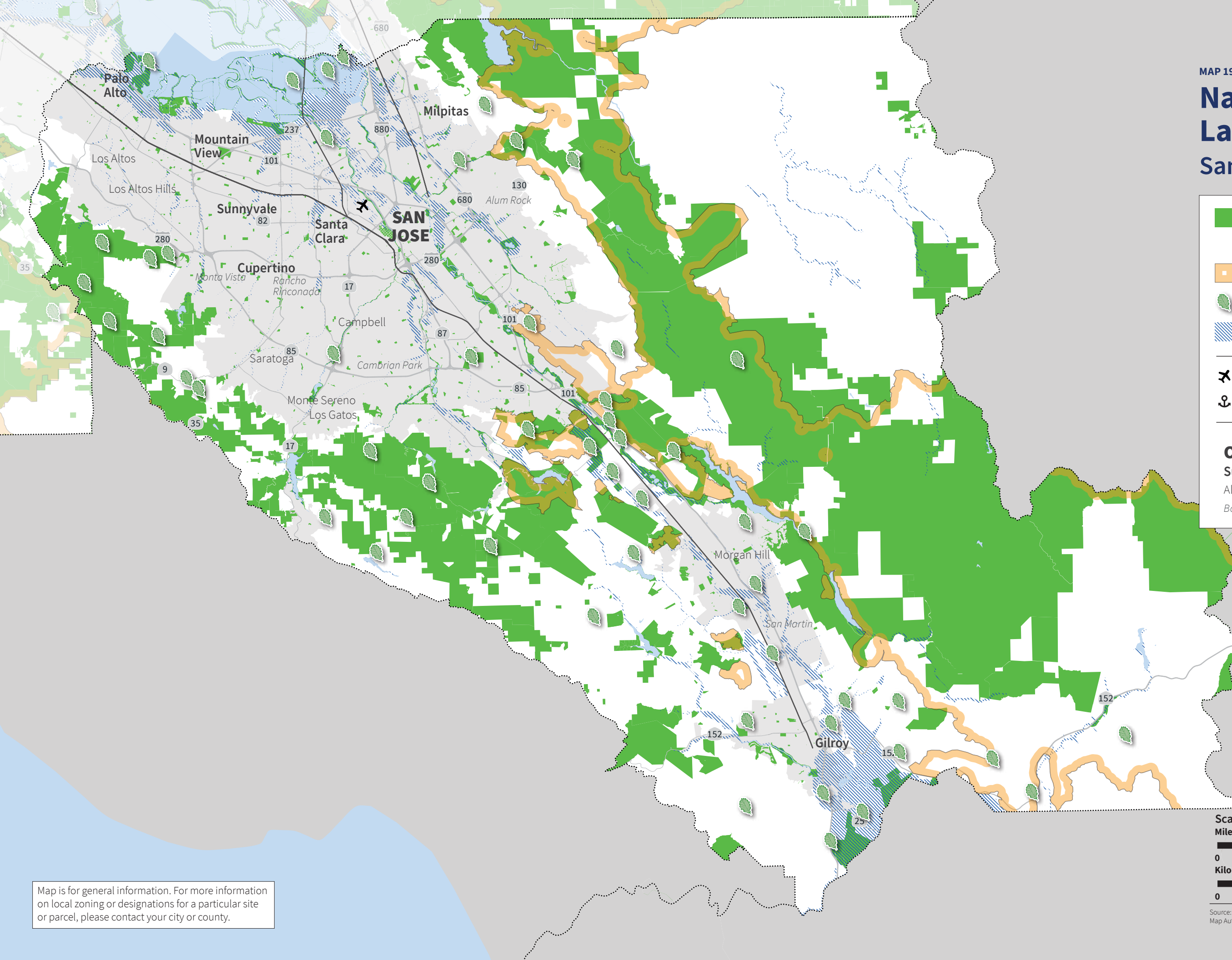
Scale:
Miles



Kilometers



Natural Lands Santa Clara County



Conservation Lands
Includes CPAD open space, Williamson Act parcels and Conservation Easements

Critical Habitat

Priority Conservation Areas

Flood Risk Areas

✈ Major Airport
⚓ Major Seaport

— Rail
— Highway and Interstate
— Major Road

Population

OAKLAND Over 350,000
Sunnyvale 50,000 to 350,000
 Albany Less than 50,000
 Bolinas Unincorporated Area

Map is for general information. For more information on local zoning or designations for a particular site or parcel, please contact your city or county.

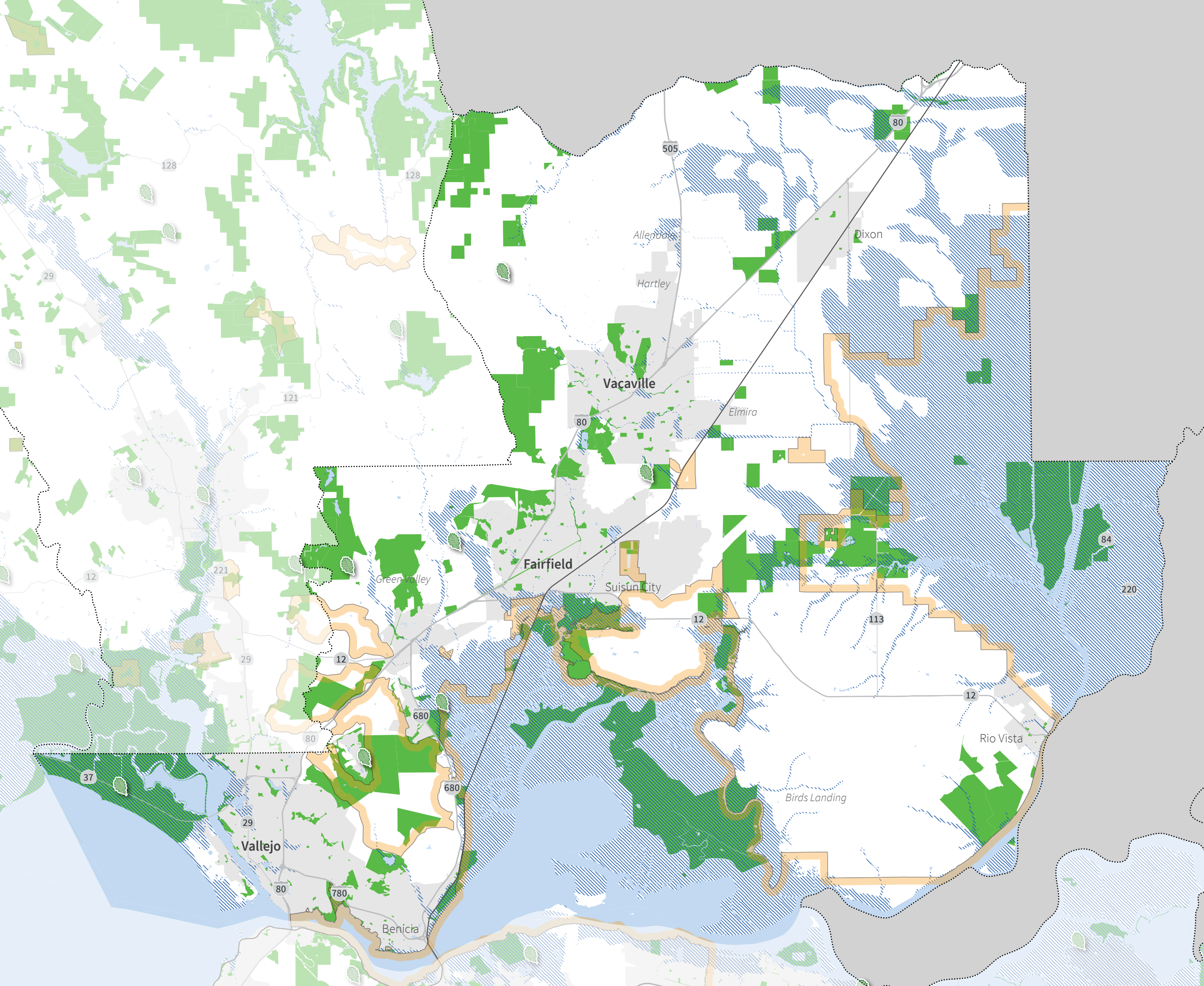


Source: TomTom North America, 2019
Map Author: PB, 5/21

MAP 20

Natural Lands

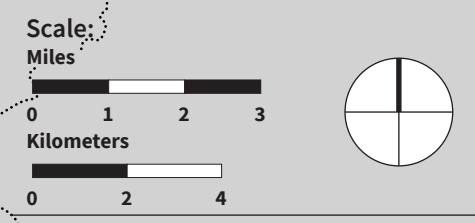
Solano County



- Conservation Lands**
Includes CPAD open space, Williamson Act parcels and Conservation Easements
- Critical Habitat**
- Priority Conservation Areas**
- Flood Risk Areas**

- Major Airport
- Major Seaport
- Rail
- Highway and Interstate
- Major Road

	Population
OAKLAND	Over 350,000
Sunnyvale	50,000 to 350,000
Albany	Less than 50,000
Bolinas	Unincorporated Area



Source: TomTom North America, 2019
Map Author: PB, 5/21

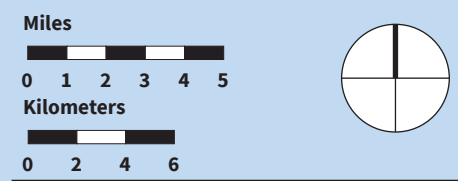
Map is for general information. For more information on local zoning or designations for a particular site or parcel, please contact your city or county.

MAP 21
**Natural
 Lands**
 Sonoma County

- Conservation Lands**
 Includes CPAD open space, Williamson Act parcels and Conservation Easements
- Critical Habitat**
- Priority Conservation Areas**
- Flood Risk Areas**

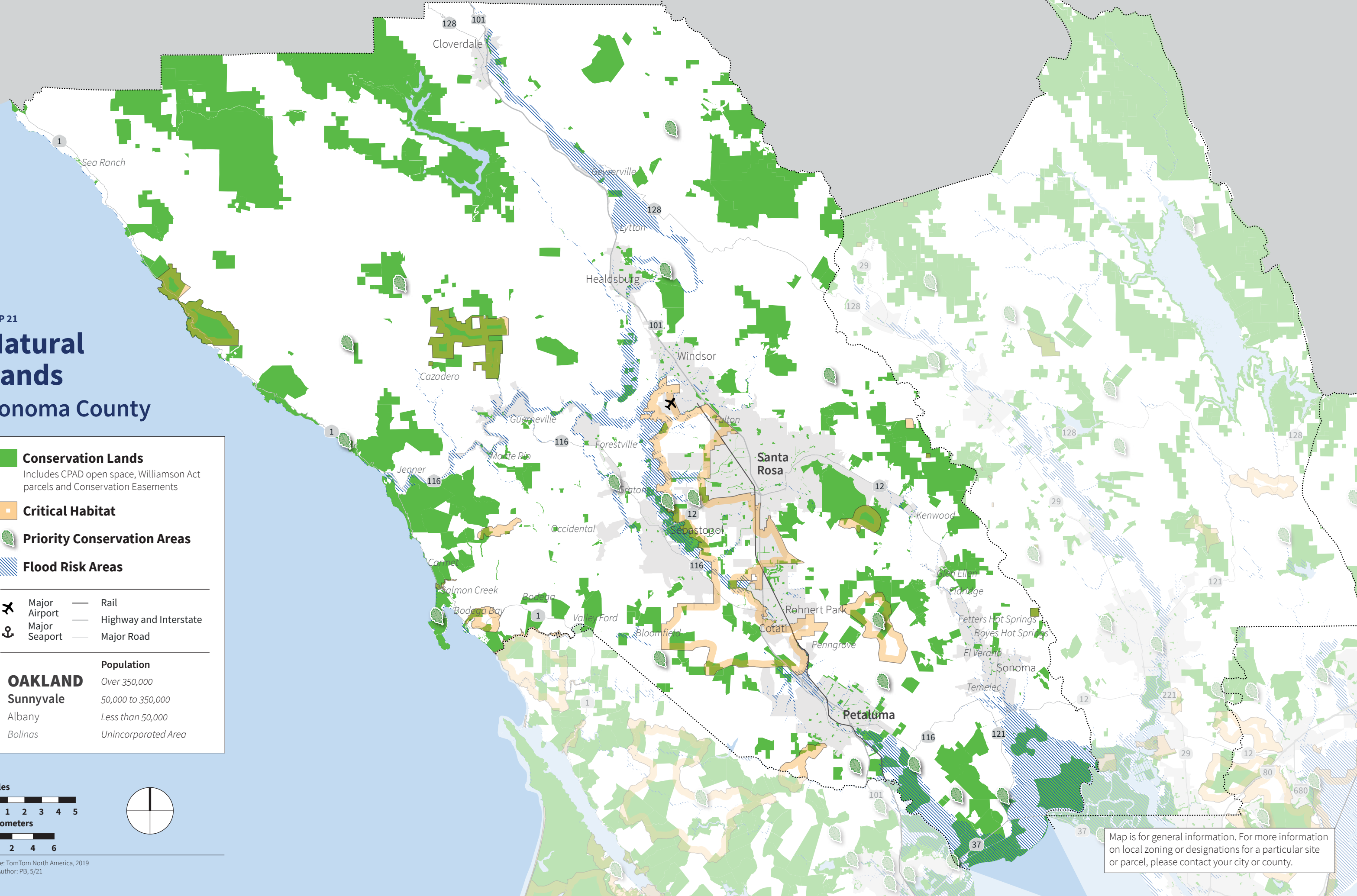
- Major Airport
- Major Seaport
- Rail
- Highway and Interstate
- Major Road

OAKLAND	
Sunnyvale	Over 350,000
Albany	50,000 to 350,000
Bolinas	Less than 50,000
	Unincorporated Area



Source: TomTom North America, 2019
 Map Author: PB, 5/21

Map is for general information. For more information on local zoning or designations for a particular site or parcel, please contact your city or county.



**Metropolitan Transportation Commission
and Association of Bay Area Governments**

Management Staff

Therese W. McMillan

Executive Director

Alix Bockelman

Deputy Executive Director, Policy

Andrew B. Fremier

Deputy Executive Director, Operations

Bradford Paul

Deputy Executive Director, Local Government Services

Kathleen Kane

General Counsel

Brian Mayhew

Chief Financial Officer

Matt Maloney

Section Director, Regional Planning Program

Theresa Romell

Section Director, Funding Policy and Programs

Randy Rentschler

Section Director, Legislation and Public Affairs